



**Custom Truck One Source**

Bakersfield, CA

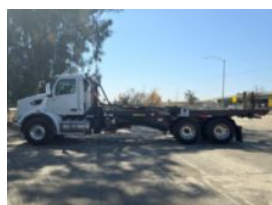
Phone: (661) 392-0092

<https://www.customtruck.com/locations>

**2025 Peterbilt 567 6x4 Spartan SRO60SC Roll-Off Truck**

**\$ 275,175**

Stock SD720184 VIN 1NPCLP0X9SD720184



| Truck Specifications      |                 | Unit Specifications     |         |
|---------------------------|-----------------|-------------------------|---------|
| <b>CARB Registered</b>    | Yes             | <b>Attachment Year</b>  | 2024    |
| <b>Year</b>               | 2025            | <b>Attachment Make</b>  | Spartan |
| <b>Make</b>               | Peterbilt       | <b>Attachment Model</b> | SRO60SC |
| <b>Model</b>              | 567             |                         |         |
| <b>Cab Type</b>           | REGULAR CAB     |                         |         |
| <b>CA or CT</b>           | 192             |                         |         |
| <b>Chassis Class</b>      | CLASS 8 CHASSIS |                         |         |
| <b>Engine Make</b>        | PACCAR          |                         |         |
| <b>Engine Model</b>       | MX-13 D         |                         |         |
| <b>Engine HP</b>          | 510             |                         |         |
| <b>Transmission</b>       | Automatic       |                         |         |
| <b>Transmission Speed</b> | 6               |                         |         |
| <b>FA Capacity</b>        | 20000           |                         |         |
| <b>RA Capacity</b>        | 46000           |                         |         |
| <b>Wheelbase</b>          | 260             |                         |         |
| <b>Brakes</b>             | AIR             |                         |         |
| <b>Rear Suspension</b>    | HMXEX460        |                         |         |
| <b>Engine Size</b>        | 13              |                         |         |
| <b>Engine Fuel Type</b>   | Diesel          |                         |         |
| <b>Axle Config</b>        | 6x4             |                         |         |
| <b>GVWR</b>               | 33001+          |                         |         |
| <b>Frame</b>              | 10750350375I    |                         |         |
| <b>PTO Options</b>        | YES             |                         |         |

DISCLAIMER: Price quoted includes any applicable FET. Quoted price is Ex Works and does not include any freight / delivery charges, sales tax, titling fees, or registration fees. Specifications are believed to be correct but may contain errors and/or omissions. Pictures are representative and may not be identical. Description and Images Custom Truck One Source