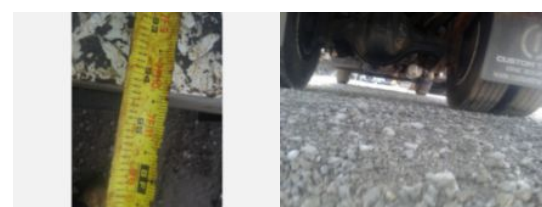
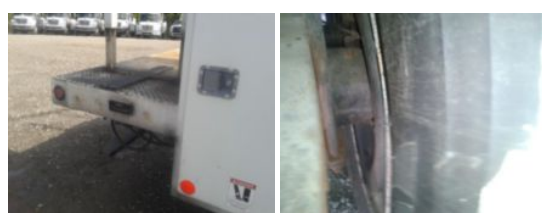


**2008 Terex 5TC-55 Bucket / 2016 Freightliner M2106 4X2**

**Call for price**

Stock HDHZ3981 VIN 3ALACXCX2HDHZ3981



Truck Specifications		Unit Specifications	
<b>Year</b>	2013	<b>Attachment Year</b>	2008
<b>Make</b>	FREIGHTLINER	<b>Attachment Make</b>	Terex
<b>Model</b>	m2106	<b>Attachment Model</b>	5TC-55
<b>Color</b>	WHITE	<b>Bed/Body Make</b>	Terex
<b>Cab Type</b>	REGULAR CAB		
<b>Chassis Class</b>	Truck		
<b>Engine Make</b>	Cummins		
<b>Engine Model</b>	ISL-270		
<b>Engine HP</b>	270		
<b>Transmission</b>	Auto		
<b>Transmission Speed</b>	6		
<b>FA Capacity</b>	14600		
<b>RA Capacity</b>	21000		
<b>Rear Axle Ratio</b>	5.88		
<b>Wheelbase</b>	189		
<b>Current Meter Reading</b>	73340		
<b>Block Heater</b>	YES		
<b>Brakes</b>	AIR		
<b>Fuel Tank Capacity</b>	50		
<b>Rear Suspension</b>	Spring		
<b>Engine Size</b>	ISL D		
<b>Engine Fuel Type</b>	Diesel		
<b>Axle Config</b>	4x2		
<b>GVWR</b>	33000		
<b>Driver Seat</b>	HIGH BACK AIR RIDE		
<b>Frame</b>	Steel		
<b>Front Tire</b>	12R22.5		
<b>Rear Tire</b>	11R22.5		
<b>PTO Options</b>	YES		
<b>Radio</b>	AM/FM		
<b>Passenger Seat</b>	HIGH BACK FIXED		
<b>Transmission</b>	Allison		