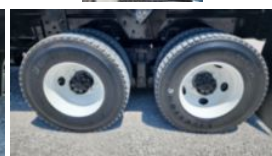


2018 Freightliner M2106 6x6 Terex General 80 Digger

\$ 289,500

Stock JHJM6210 VIN 1FVKCYFE3JHJM6210



Truck Specifications		Unit Specifications	
Year	2018	Attachment Year	2017
Make	Freightliner	Attachment Make	Terex
Model	M2106	Attachment Model	General 80
Cab Type	REGULAR CAB		
CA or CT	142		
Chassis Class	CLASS 8 CHASSIS		
Engine Make	CUMMINS		
Engine Model	L9 D		
Engine HP	330		
Transmission	Automatic		
Transmission Speed	6		
FA Capacity	18000		
RA Capacity	40000		
Rear Axle Ratio	6.14		
Wheelbase	208		
Block Heater	YES		
Brakes	AIR		
Fuel Tank Capacity	50		
Rear Suspension	HENDRICKSON RT 403		
Engine Size	L9 D		
Engine Fuel Type	Diesel		
Axle Config	6x6		
GVWR	58000		
Driver Seat	HIGH BACK AIR RIDE		
Frame	DOUBLE		
Front Tire	385/65R22.5		
Rear Tire	11R22.5		
PTO Options	YES		
Radio	AM/FM/CD		
Passenger Seat	TWO PERSON BENCH		