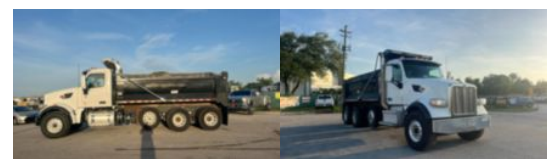
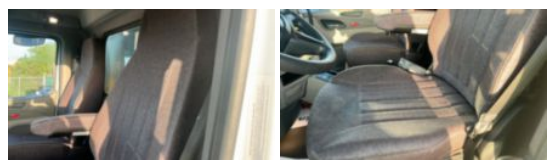


2019 Peterbilt 567 8x4 Ox Bodies 16 Ft. Dump Truck
\$ 178,500

Stock KD268250 VIN 1NPCLP0X3KD268250



Truck Specifications		Unit Specifications	
Year	2019	Bed/Body Make	Ox Bodies
Make	Peterbilt	Bed/Body Model	Stampede
Model	567		
Color	WHITE		
Cab Type	REGULAR CAB		
CA or CT	140		
Chassis Class	CLASS 8 CHASSIS		
Engine Make	PACCAR		
Engine Model	MX-13 D		
Engine HP	455		
Transmission	Automatic		
Transmission Speed	6		
FA Capacity	20000		
RA Capacity	46000		
Rear Axle Ratio	4.56		
Wheelbase	231		
Current Meter Reading	169457		
Engine Hours	7078		
Block Heater	YES		
Brakes	AIR		
Fuel Tank Capacity	90		
Pusher Axle(s)	YES		
Rear Suspension	HENDRICKSON HMX460		
Engine Size	13		
Engine Fuel Type	Diesel		
Axle Config	8x4		
Diesel Exhaust Fluid	SMALL		
GVWR	66000		
Driver Seat	HIGH BACK AIR RIDE		
Frame	DOUBLE		
Front Tire	425/65R22.5		
Rear Tire	11R22.5		
Power Locks	YES		
Front Axle Location	SFFA - SET FORWARD FRONT AXLE		
PTO Options	YES		
Radio	AM/FM + BLUETOOTH		
Power Windows	YES		
Passenger Seat	HIGH BACK FIXED		