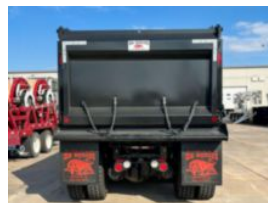


2025 Peterbilt 567 12x4 Ox Bodies 20' Stampede Dump

\$ 282,364

Stock SD713980 VIN 1NPCXPTX9SD713980



Truck Specifications		Unit Specifications	
Year	2025	Attachment Year	2024
Make	Peterbilt	Attachment Make	Ox Bodies
Model	567	Attachment Model	20' STAMPEDE
Cab Type	REGULAR CAB	Bed/Body Make	Ox Bodies
CA or CT	195	Bed/Body Model	OXSP20X483/16DB
Chassis Class	CLASS 8 CHASSIS		
Engine Make	PACCAR		
Engine Model	MX-13 D		
Engine HP	510		
Transmission	Automatic		
Transmission Speed	6		
FA Capacity	20000		
RA Capacity	46000		
Wheelbase	285		
Brakes	AIR		
Pusher Axle(s)	(3) 8K S		
Rear Suspension	HMXEX460		
Engine Size	13		
Engine Fuel Type	Diesel		
Axle Config	12x4		
GVWR	33001+		
Frame	13375362375V		
PTO Options	YES		