



**Custom Truck One Source**

Bakersfield, CA

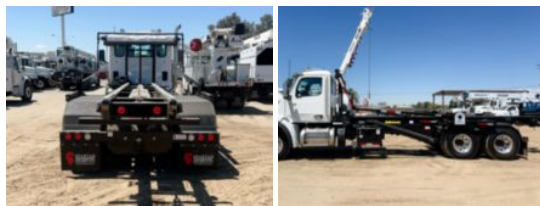
Phone: (661) 392-0092

<https://www.customtruck.com/locations>

**2024 Peterbilt 567 6x4 Spartan SRO60SC Roll-Off Truck**

**\$ 279,979**

Stock RD663428 VIN 1NPCL40X9RD663428



Truck Specifications		Unit Specifications	
<b>CARB Registered</b>	Yes	<b>Attachment Year</b>	2023
<b>Year</b>	2024	<b>Attachment Make</b>	Spartan
<b>Make</b>	Peterbilt	<b>Attachment Model</b>	SRO60SC
<b>Model</b>	567		
<b>Cab Type</b>	REGULAR CAB		
<b>CA or CT</b>	192		
<b>Chassis Class</b>	CLASS 8 CHASSIS		
<b>Engine Make</b>	CUMMINS		
<b>Engine Model</b>	X15 D		
<b>Engine HP</b>	450		
<b>Transmission</b>	Automatic		
<b>Transmission Speed</b>	6		
<b>FA Capacity</b>	20000		
<b>RA Capacity</b>	40000		
<b>Wheelbase</b>	266		
<b>Brakes</b>	AIR		
<b>Rear Suspension</b>	AIR		
<b>Engine Size</b>	14.9		
<b>Engine Fuel Type</b>	Diesel		
<b>Axle Config</b>	6x4		
<b>GVWR</b>	33001+		
<b>Frame</b>	10625350313I		
<b>PTO Options</b>	YES		

DISCLAIMER: Price quoted includes any applicable FET. Quoted price is Ex Works and does not include any freight / delivery charges, sales tax, titling fees, or registration fees. Specifications are believed to be correct but may contain errors and/or omissions. Pictures are representative and may not be identical. Description and Images Custom Truck One Source