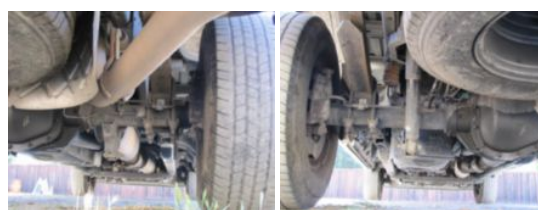


2018 Ford F250

\$ 24,000

Stock JEC80249 VIN 1FT7X2A63JEC80249



Unit Specifications		Unit Specifications	
Year	2018		
Make	FORD		
Model	F250		
Chassis Class	LightDuty		
Engine Make	Ford		
Engine Model	6.2L 16V OHC NA V8		
Engine HP	385		
Transmission	Auto		
Transmission Speed	6		
FA Capacity	4250		
RA Capacity	6340		
Rear Axle Ratio	3.73		
Wheelbase	164		
Current Meter Reading	80923		
Fuel Tank Capacity	30		
Rear Suspension	Spring		
Engine Fuel Type	Gasoline		
GVWR	10000		
Transmission	Ford		