



Custom Truck One Source

Bakersfield, CA

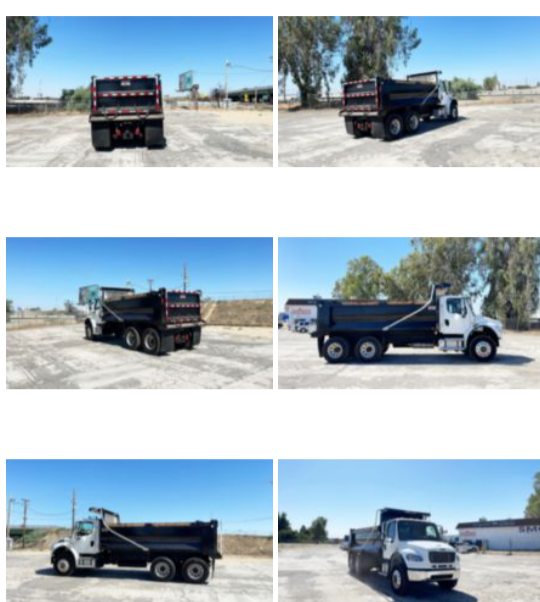
Phone: (661) 392-0092

<https://www.customtruck.com/locations>

2020 Freightliner M2106 6x4 OX Bodies Dump Truck

\$ 147,500

Stock LDLL3309 VIN 3ALHCYFE0LDLL3309



Truck Specifications		Unit Specifications	
Year	2020	Attachment Year	2019
Make	Freightliner	Bed/Body Make	Ox Bodies
Model	M2106	Bed/Body Model	Stampede
Color	WHITE		
Cab Type	REGULAR CAB		
CA or CT	137		
Chassis Class	CLASS 8 CHASSIS		
Engine Make	CUMMINS		
Engine Model	ISL D		
Engine HP	350		
Transmission	Automatic		
Transmission Speed	6		
FA Capacity	18000		
RA Capacity	40000		
Wheelbase	206		
Current Meter Reading	40917		
Engine Hours	2699		
Brakes	AIR		
Fuel Tank Capacity	50		
Rear Suspension	HENDRICKSON RT 403		
Engine Size	ISL D		
Engine Fuel Type	Diesel		
Axle Config	6x4		
Diesel Exhaust Fluid	6		
GVWR	58000		
Driver Seat	HIGH BACK AIR RIDE		
Frame	DOUBLE		
Front Tire	315/80R22.5		
Rear Tire	11R22.5		
Power Locks	YES		
PTO Options	YES		
Radio	AM/FM/WB		
Power Windows	DRIVER AND PASSENGER		
Passenger Seat	HIGH BACK FIXED		

DISCLAIMER: Price quoted includes any applicable FET. Quoted price is Ex Works and does not include any freight / delivery charges, sales tax, titling fees, or registration fees. Specifications are believed to be correct but may contain errors and/or omissions. Pictures are representative and may not be identical. Description and Images Custom Truck One Source