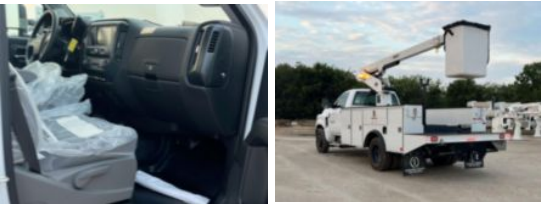


2023 Chevrolet 6500 4x2 Versalift SST-36-NE Bucket Truck

\$ 138,500

Stock PH789831 VIN 1HTKHPVM1PH789831



| Truck Specifications |                 | Unit Specifications |                 |
|----------------------|-----------------|---------------------|-----------------|
| Year                 | 2023            | Attachment Year     | 2023            |
| Make                 | Chevrolet       | Attachment Make     | Versalift       |
| Model                | 5500            | Attachment Model    | TEL-29-NE       |
| Cab Type             | REGULAR CAB     | Bed/Body Make       | Reading         |
| CA or CT             | 84              | Bed/Body Model      | RTBTTEL29LU084L |
| Chassis Class        | CLASS 5 CHASSIS | Maximum Work        | 34.75           |
| Engine Make          | DURAMAX         |                     |                 |
| Engine Model         | 6.6L D          |                     |                 |
| Engine HP            | 350             |                     |                 |
| Transmission         | Automatic       |                     |                 |
| Transmission Speed   | 6               |                     |                 |
| FA Capacity          | 8000            |                     |                 |
| RA Capacity          | 15500           |                     |                 |
| Wheelbase            | 165             |                     |                 |
| Brakes               | HYDRAULIC       |                     |                 |
| Rear Suspension      | SPRING          |                     |                 |
| Engine Size          | 6.6             |                     |                 |
| Engine Fuel Type     | Diesel          |                     |                 |
| Axle Config          | 4x2             |                     |                 |
| GVWR                 | 19500           |                     |                 |
| Frame                | SINGLE          |                     |                 |
| PTO Options          | YES             |                     |                 |