



Custom Truck One Source

Union Grove, WI

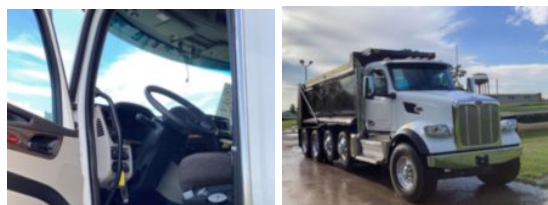
Phone: (262) 878-5977

<https://www.customtruck.com/locations>

2025 Peterbilt 567 10x4 19' Load King Dump Truck

\$ 248,255

Stock SD715841 VIN 1NPCXPEX9SD715841



Truck Specifications		Unit Specifications	
Year	2025	Attachment Year	2023
Make	Peterbilt	Bed/Body Make	Load King
Model	567	Bed/Body Model	LKXD19X603/16DB
Cab Type	REGULAR CAB		
CA or CT	171		
Chassis Class	CLASS 8 CHASSIS		
Engine Make	PACCAR		
Engine Model	MX-13 D		
Engine HP	510		
Transmission	Automatic		
Transmission Speed	6		
FA Capacity	20000		
RA Capacity	46000		
Wheelbase	245		
Brakes	AIR		
Pusher Axle(s)	(2) 13.5K S		
Rear Suspension	AIR		
Engine Size	13		
Engine Fuel Type	Diesel		
Axle Config	10x4		
GVWR	33001+		
Frame	11625387375S		
PTO Options	YES		

DISCLAIMER: Price quoted includes any applicable FET. Quoted price is Ex Works and does not include any freight / delivery charges, sales tax, titling fees, or registration fees. Specifications are believed to be correct but may contain errors and/or omissions. Pictures are representative and may not be identical. Description and Images Custom Truck One Source