



Custom Truck One Source

Union Grove, WI

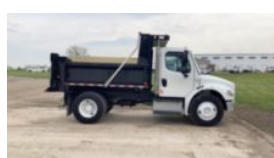
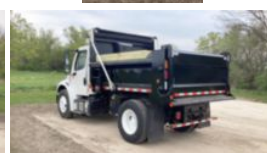
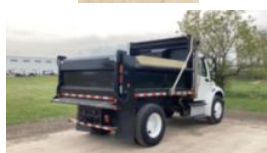
Phone: (262) 878-5977

<https://www.customtruck.com/locations>

2019 Freightliner M2106 4x2 Load King 10 Ft. Dump Truck

\$ 81,500

Stock KHKT8949 VIN 1FVACWFD2KHKT8949



Truck Specifications		Unit Specifications	
Year	2019	Attachment Year	2018
Make	Freightliner	Attachment Make	Load King
Model	M2106	Attachment Model	LK10DB
Color	WHITE	Bed/Body Make	Load King
Cab Type	REGULAR CAB	Bed/Body Model	10' DUMP
Chassis Class	CLASS 6 CHASSIS		
Engine Make	CUMMINS		
Engine Model	ISB D		
Engine HP	220		
Transmission	M2106		
Transmission Speed	M2106		
FA Capacity	8000		
RA Capacity	18000		
Rear Axle Ratio	6.43		
Wheelbase	154		
Current Meter Reading	28871		
Engine Hours	2540		
Block Heater	YES		
Brakes	HYDRAULIC		
Fuel Tank Capacity	50		
Rear Suspension	MULTI LEAF		
Engine Size	6.7		
Engine Fuel Type	Diesel		
Axle Config	4x2		
GVWR	26000		
Driver Seat	HIGH BACK AIR RIDE		
Frame	SINGLE		
Front Tire	11R22.5		
Rear Tire	11R22.5		
PTO Options	YES		
Radio	AM/FM		
Passenger Seat	HIGH BACK FIXED		

DISCLAIMER: Price quoted includes any applicable FET. Quoted price is Ex Works and does not include any freight / delivery charges, sales tax, titling fees, or registration fees. Specifications are believed to be correct but may contain errors and/or omissions. Pictures are representative and may not be identical. Description and Images Custom Truck One Source