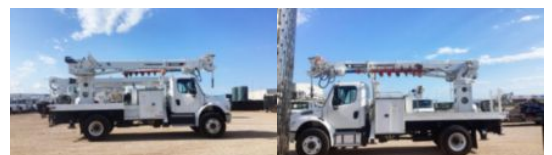


**2015 Freightliner M2106 4x4 Terex C4047 Digger Derrick**
**\$ 96,500**

Stock FHGG6459 VIN 1FVDCXDT8FHGG6459



Truck Specifications		Unit Specifications	
<b>Year</b>	2015	<b>Attachment Year</b>	2014
<b>Make</b>	Freightliner	<b>Attachment Make</b>	Terex
<b>Model</b>	M2106	<b>Attachment Model</b>	Commander 4047
<b>Color</b>	WHITE	<b>Bed/Body Make</b>	DAKOTA BODIES
<b>Cab Type</b>	REGULAR CAB	<b>Bed/Body Model</b>	T-BOX FLATBED
<b>Chassis Class</b>	CLASS 7 CHASSIS		
<b>Engine Make</b>	CUMMINS		
<b>Engine Model</b>	ISB D		
<b>Engine HP</b>	250		
<b>Transmission</b>	M2106		
<b>Transmission Speed</b>	M2106		
<b>FA Capacity</b>	14000		
<b>RA Capacity</b>	21000		
<b>Rear Axle Ratio</b>	5.57		
<b>Wheelbase</b>	190		
<b>Current Meter Reading</b>	86720		
<b>Engine Hours</b>	7763		
<b>Block Heater</b>	YES		
<b>Brakes</b>	AIR		
<b>Fuel Tank Capacity</b>	50		
<b>Rear Suspension</b>	SPRING		
<b>Engine Size</b>	6.7		
<b>Engine Fuel Type</b>	Diesel		
<b>Axle Config</b>	4x4		
<b>GVWR</b>	33000		
<b>Driver Seat</b>	BENCH - FULL WIDTH		
<b>Frame</b>	SINGLE		
<b>Front Tire</b>	12R22.5		
<b>Rear Tire</b>	12R22.5		
<b>Power Locks</b>	NO		
<b>PTO Options</b>	YES		
<b>Radio</b>	AM/FM		
<b>Power Windows</b>	NO		