



2018 Condux AFB506 Puller Tensioner

Equipment# 219994

CHASSIS SPECS

UNIT INFORMATION

VIN: 1C9HU1827J0032264

(2) 60" Bullwheels with 8 Grooves
Bullwheels Can Be Locked Together or
Independently Operated

Max Pull (Single Line): 20,000 Lbs.
Max Pull (Two Bundle): 10,000 Lbs.
Light Gear: 675 Lbs To 3,150 Lbs
High Gear: 1,700 Lbs To 10,100 Lbs
Weight: 17,000 Lbs.

ENGINE

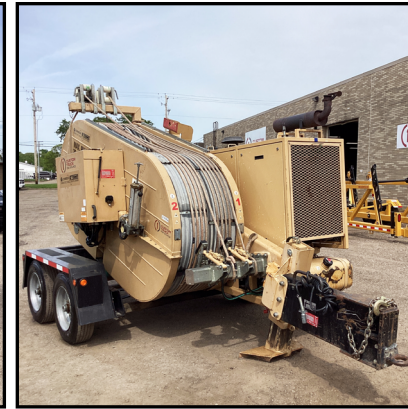
John Deere 4045HF, 86 HP
S/N: CD4045L313378
Hours: 1,011

BRAKES

Electric

TIRES/WHEELS

Tires: 215/75R17.5
Wheels: Aluminum



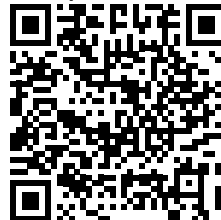
WHOLESALE DISCLAIMER:

These sale units are being sold "AS IS - WHERE IS" and "WITH ALL FAULTS". CTOS HEREBY EXPRESSLY DISCLAIMS ALL WARRANTIES, EITHER EXPRESS OR IMPLIED, INCLUDING ANY WARRANTY OF THE MERCHANTABILITY OR FITNESS FOR A PARTICULAR PURPOSE, and neither assumes nor authorizes any other person to assume for it any liability in connection with the sale of this unit.

These units have been in CTOS's rental fleet, but may not be "rent-ready" and have not gone through CTOS' typical rent-ready inspection process, which may include a DOT inspection, routine maintenance and service..

Purchaser may request an inspection and service for these units, but such inspection and service will be additional cost and will be quoted on a time and materials basis. Potential purchasers are advised to inspect the units in person as CTOS will only share photos and service reports as available and per request.

Click / Scan For Info



888-684-8146

www.customtruck.com

ASK ABOUT THE CUSTOMIZED AND FLEXIBLE LEASING & FINANCING SOLUTIONS AVAILABLE FROM CUSTOM TRUCK CAPITAL
DISCLAIMER: Specifications are believed to be correct, but may contain errors and/or omissions. Pictures are representative and may not be identical.

WHOLESALE PRICE: \$65,000

STOCK#: J0032264

EX WORKS: Canton, OH

QUOTE NUMBER: KR2.14-G_23

EXPIRATION DATE: 06/30/2024