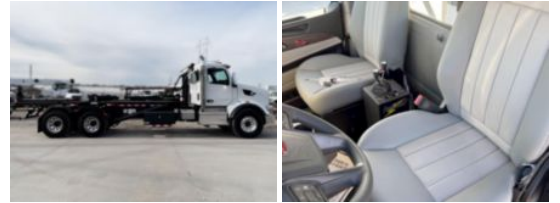


2024 Peterbilt 567 6x4 Galbreath U5-OR-174 Roll-Off Truck

Call for price

Stock RD646594 VIN 1NPCLP0X5RD646594



Truck Specifications		Unit Specifications	
Year	2024	Attachment Year	2023
Make	Peterbilt	Attachment Make	Galbreath
Model	567	Attachment Model	U5-OR-174
Cab Type	REGULAR CAB		
CA or CT	192		
Chassis Class	CLASS 8 CHASSIS		
Engine Make	PACCAR		
Engine Model	MX-13 D		
Engine HP	510		
Transmission	567		
Transmission Speed	567		
FA Capacity	20000		
RA Capacity	46000		
Wheelbase	260		
Current Meter Reading	0		
Engine Hours	0		
Brakes	AIR		
Rear Suspension	HMXEX460		
Engine Size	13		
Engine Fuel Type	Diesel		
Axle Config	6x4		
GVWR	33001+		
Frame	10750350375I		
PTO Options	YES		