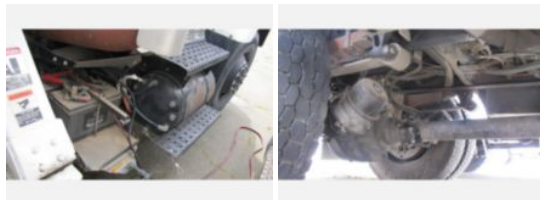
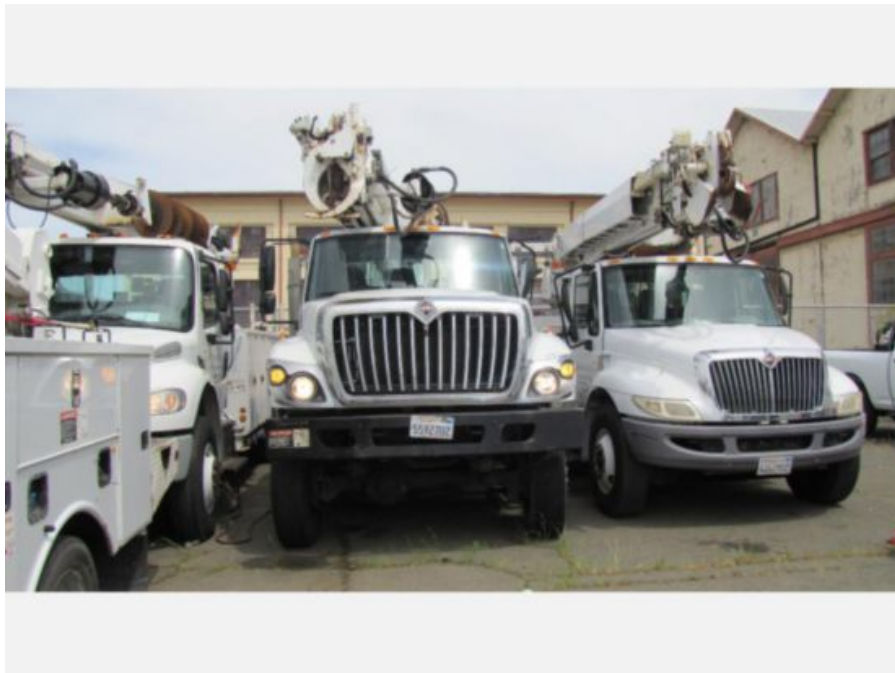


**Altec DC47 Digger Derrick 2013 International 7300**

**Call for price**

Stock DJ093222 VIN 1HTWBAAN9DJ093222



| Truck Specifications         |               | Unit Specifications     |       |
|------------------------------|---------------|-------------------------|-------|
| <b>Year</b>                  | 2013          | <b>Attachment Make</b>  | Altec |
| <b>Make</b>                  | INTERNATIONAL | <b>Attachment Model</b> | DC47  |
| <b>Model</b>                 | 7300          |                         |       |
| <b>Chassis Class</b>         | Truck         |                         |       |
| <b>Engine Make</b>           | International |                         |       |
| <b>Engine Model</b>          | dt466 7.6l    |                         |       |
| <b>Engine HP</b>             | 245           |                         |       |
| <b>Transmission</b>          | Auto          |                         |       |
| <b>Transmission Speed</b>    | 5             |                         |       |
| <b>FA Capacity</b>           | 13000         |                         |       |
| <b>RA Capacity</b>           | 20000         |                         |       |
| <b>Rear Axle Ratio</b>       | 5.63          |                         |       |
| <b>Wheelbase</b>             | 201           |                         |       |
| <b>Current Meter Reading</b> | 69071         |                         |       |
| <b>Fuel Tank Capacity</b>    | 50            |                         |       |
| <b>Rear Suspension</b>       | Spring        |                         |       |
| <b>Engine Fuel Type</b>      | Diesel        |                         |       |
| <b>GVWR</b>                  | 33000         |                         |       |
| <b>Frame</b>                 | Steel         |                         |       |
| <b>Transmission</b>          | Allison       |                         |       |