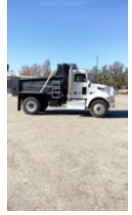
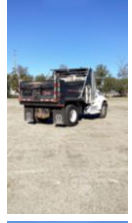


2018 Peterbilt 337 4x2 Brandon 10 Ft. Dump Truck
\$ 84,500

Stock JM462273 VIN 2NP2HJ7X9JM462273



Truck Specifications		Unit Specifications	
Year	2018	Attachment Year	2017
Make	Peterbilt	Bed/Body Make	BRANDON
Model	337	Bed/Body Model	10' DUMP
Color	WHITE		
Cab Type	REGULAR CAB		
Chassis Class	CLASS 7 CHASSIS		
Engine Make	PACCAR		
Engine Model	PX9 D		
Engine HP	300		
Transmission	337		
Transmission Speed	337		
FA Capacity	13000		
RA Capacity	20000		
Current Meter Reading	35499		
Engine Hours	2515		
Block Heater	YES		
Brakes	AIR		
Fuel Tank Capacity	50		
Rear Suspension	REYCO		
Engine Size	PX9 D		
Engine Fuel Type	Diesel		
Axle Config	4x2		
GVWR	33000		
Driver Seat	MID BACK AIR RIDE		
Frame	SINGLE		
Front Tire	12R22.5		
Rear Tire	11R22.5		
Power Locks	NO		
PTO Options	YES		
Radio	AM/FM		
Power Windows	PASSENGER ONLY		
Passenger Seat	MID BACK FIXED		