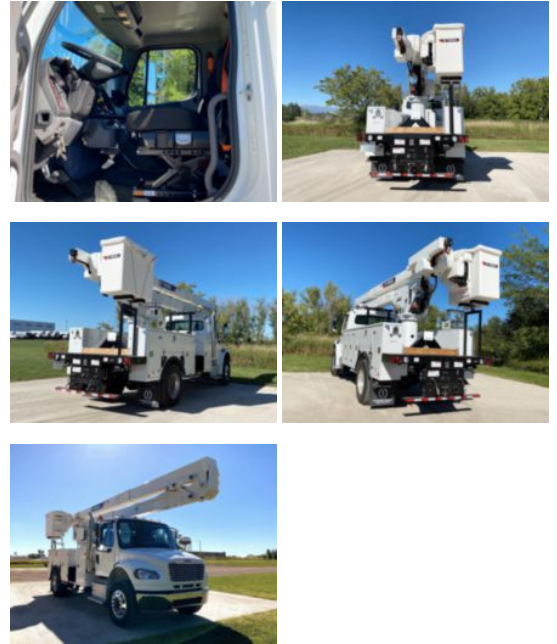


2024 Freightliner M2106 4x2 Terex Utilities TC55 Optima
\$ 222,853

Stock RDVB6224 VIN 3ALACXFE9RDVB6224



Truck Specifications		Unit Specifications	
Year	2024	Attachment Year	2023
Make	Freightliner	Attachment Make	Terex Utilities
Model	M2106	Attachment Model	TC55 Optima
Cab Type	REGULAR CAB	Bed/Body Make	Poudrier
CA or CT	124	Bed/Body Model	AUPTC55MU120UL
Chassis Class	CLASS 7 CHASSIS	Maximum Work	60
Engine Make	CUMMINS		
Engine Model	L9 D		
Engine HP	300		
Transmission	M2106		
Transmission Speed	M2106		
FA Capacity	14600		
RA Capacity	21000		
Wheelbase	190		
Current Meter Reading	0		
Engine Hours	0		
Brakes	AIR		
Rear Suspension	SPRING		
Engine Size	L9 D		
Engine Fuel Type	Diesel		
Axle Config	4x2		
GVWR	33000		
Frame	11125356438S		
PTO Options	YES		