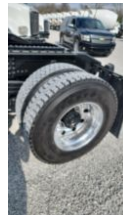


**2015 Freightliner M2106 6x6 Daycab Tractor**
**\$ 149,500**

Stock FHGN2808 VIN 1FVKCYCY5FHGN2808


**Truck Specifications**
**Unit Specifications**

<b>Year</b>	2015
<b>Make</b>	Freightliner
<b>Model</b>	M2106
<b>Color</b>	WHITE
<b>Cab Type</b>	REGULAR CAB
<b>CA or CT</b>	128
<b>Chassis Class</b>	CLASS 8 CHASSIS
<b>Engine Make</b>	CUMMINS
<b>Engine Model</b>	ISL D
<b>Engine HP</b>	350
<b>Transmission</b>	M2106
<b>Transmission Speed</b>	M2106
<b>FA Capacity</b>	17500
<b>RA Capacity</b>	40000
<b>Rear Axle Ratio</b>	6.14
<b>Wheelbase</b>	194
<b>Current Meter Reading</b>	34260
<b>Engine Hours</b>	5238
<b>Block Heater</b>	YES
<b>Brakes</b>	AIR
<b>Fuel Tank Capacity</b>	50
<b>Rear Suspension</b>	TUFTRAC
<b>Engine Size</b>	ISL D
<b>Engine Fuel Type</b>	Diesel
<b>Axle Config</b>	6x6
<b>GVWR</b>	57500
<b>Driver Seat</b>	HIGH BACK AIR RIDE
<b>Frame</b>	DOUBLE
<b>Front Tire</b>	385/65R22.5
<b>Rear Tire</b>	11R22.5
<b>Power Locks</b>	YES
<b>PTO Options</b>	PROVISION
<b>Radio</b>	AM/FM
<b>Power Windows</b>	YES
<b>Passenger Seat</b>	TWO PERSON BENCH