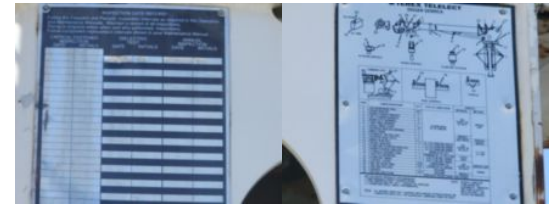


2018 Digger Derrick

\$ 120,000

Stock JHHM6277 VIN 1FVDCXFC0JHHM6277



Truck Specifications		Unit Specifications	
Year	2018	Attachment Make	Terex
Make	FREIGHTLINER	Attachment Model	4047
Model	M2106		
Chassis Class	Truck		
Engine Make	Cummins		
Engine Model	B 6.7		
Engine HP	250		
Transmission	Auto		
Transmission Speed	6		
FA Capacity	14000		
RA Capacity	21000		
Rear Axle Ratio	5.57		
Wheelbase	190		
Current Meter Reading	75046		
Fuel Tank Capacity	50		
Rear Suspension	Spring		
Engine Fuel Type	Diesel		
GVWR	33000		
Frame	Steel		
Transmission	Allison		