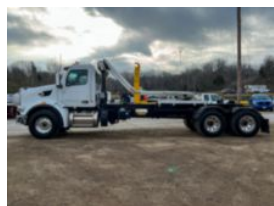


2024 Peterbilt 567 6x4 Palfinger T60 Hook Lift Truck
\$ 292,199

Stock RD678765 VIN 1NPCL40X3RD678765



Truck Specifications		Unit Specifications	
Year	2024	Attachment Make	Palfinger
Make	Peterbilt	Attachment Model	T60
Model	567		
Cab Type	REGULAR CAB		
CA or CT	210		
Chassis Class	CLASS 8 CHASSIS		
Engine Make	CUMMINS		
Engine Model	X15 D		
Engine HP	525		
Transmission	567		
Transmission Speed	567		
FA Capacity	20000		
RA Capacity	46000		
Wheelbase	284		
Current Meter Reading	0		
Engine Hours	0		
Brakes	AIR DISC		
Rear Suspension	HMXEX460		
Engine Size	14.9		
Engine Fuel Type	Diesel		
Axle Config	6x4		
Frame	10750350375I		
PTO Options	YES		