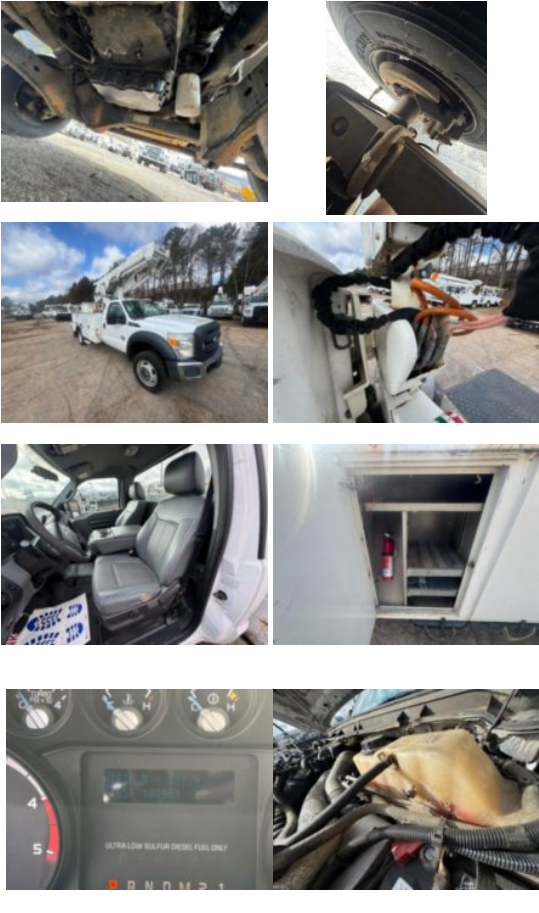


2015 Ford F-550 Diesel 4x4 Versalift VST-47-I Material

\$ 40,150

Stock FED19212 VIN 1FDUF5HT4FED19212



| Truck Specifications | | Unit Specifications | |
|--------------------------|-------------|--------------------------|-----------|
| Year | 2015 | Attachment Year | 2015 |
| Make | FORD | Attachment Make | Versalift |
| Model | F550 | Attachment Model | VST-47-I |
| Color | WHITE | Maximum Work Height (ft) | 52 |
| Cab Type | REGULAR CAB | | |
| Chassis Class | Truck | | |
| Engine Make | Ford | | |
| Engine Model | 6.7 | | |
| Engine HP | 300 | | |
| Transmission Make | Ford | | |
| Transmission | Auto | | |
| Transmission Speed | 6 | | |
| FA Capacity | 7,000 | | |
| RA Capacity | 12,500 | | |
| Rear Axle Ratio | 4.88 | | |
| Wheelbase | 165 | | |
| Current Meter Reading | 187,989 | | |
| Brakes | HYDRAULIC | | |
| Fuel Tank Capacity (gal) | 32 | | |
| Rear Suspension | Spring | | |
| Engine Size | 6.7 | | |
| Engine Fuel Type | Diesel | | |
| Axle Config | 4x4 | | |
| GVWR (lb) | 19,500 | | |
| Driver Seat | HIGH BACK | | |
| Frame | Steel | | |
| Front Tire | 225/70R19.5 | | |
| Rear Tire | 225/70R19.5 | | |
| PTO Options | YES | | |
| Radio | AM/FM/CD | | |
| Passenger Seat | HIGH BACK | | |