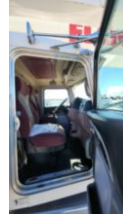


**2014 Peterbilt 365 8x6 Elliott 40142 Boom Truck**

**\$ 249,500**

Stock ED244505 VIN 1NPSXJEX8ED244505



Truck Specifications		Unit Specifications	
<b>Year</b>	2014	<b>Attachment Year</b>	2013
<b>Make</b>	Peterbilt	<b>Attachment Make</b>	Elliott
<b>Model</b>	365	<b>Attachment Model</b>	40142R
<b>Color</b>	WHITE		
<b>Cab Type</b>	REGULAR CAB		
<b>Chassis Class</b>	CLASS 8 CHASSIS		
<b>Engine Make</b>	PACCAR		
<b>Engine Model</b>	PX9		
<b>Engine HP</b>	380		
<b>Transmission</b>	365		
<b>Transmission Speed</b>	365		
<b>FA Capacity</b>	20000		
<b>RA Capacity</b>	66000		
<b>Rear Axle Ratio</b>	4.78		
<b>Current Meter Reading</b>	26580		
<b>Engine Hours</b>	6485		
<b>Block Heater</b>	YES		
<b>Brakes</b>	AIR		
<b>Fuel Tank Capacity</b>	100		
<b>Rear Suspension</b>	AIR TRAC		
<b>Engine Size</b>	8.9		
<b>Engine Fuel Type</b>	Diesel		
<b>Axle Config</b>	8x6		
<b>GVWR</b>	80000		
<b>Driver Seat</b>	HIGH BACK AIR RIDE		
<b>Frame</b>	SINGLE		
<b>Front Tire</b>	425/65R22.5		
<b>Rear Tire</b>	455/55R22.5		
<b>Power Locks</b>	YES		
<b>PTO Options</b>	YES		
<b>Radio</b>	AM/FM + BLUETOOTH		
<b>Power Windows</b>	YES		
<b>Passenger Seat</b>	HIGH BACK FIXED		