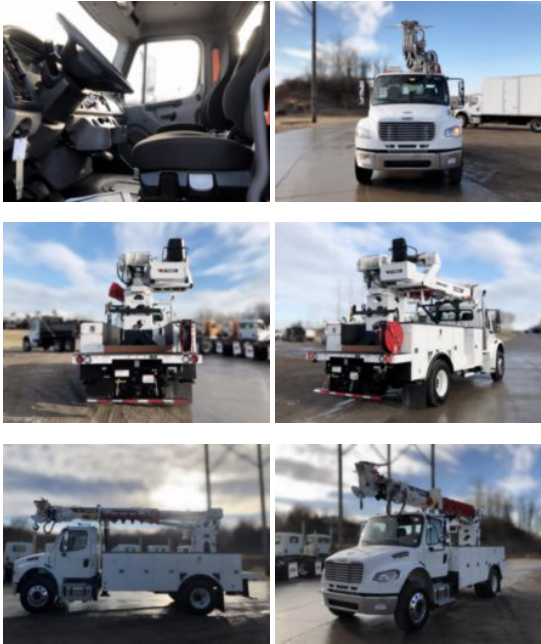


Terex Utilities Commander 4047 Digger Derrick on 2024

\$ 238,880

Stock RDUY8893

VIN 3ALACXFE3RDUY8893



Truck Specifications		Unit Specifications	
Year	2024	Attachment Year	2022
Make	Freightliner	Attachment Make	Terex Utilities
Model	M2106	Attachment Model	Commander 4047
Cab Type	REGULAR CAB		
CA or CT	123		
Chassis Class	CLASS 7 CHASSIS		
Engine Make	CUMMINS		
Engine Model	L9 D		
Engine HP	300		
Transmission	M2106		
Transmission Speed	M2106		
FA Capacity	14700		
RA Capacity	21000		
Wheelbase	189		
Current Meter Reading	0		
Engine Hours	0		
Brakes	AIR		
Rear Suspension	SPRING		
Engine Size	L9 D		
Engine Fuel Type	Diesel		
Axle Config	4x2		
GVWR	33000		
Frame	11125356438S		
PTO Options	YES		