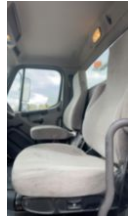
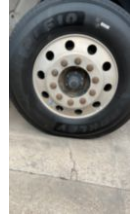
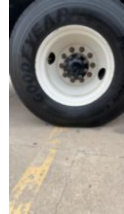
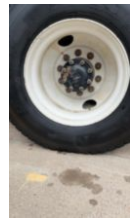


2013 Ford F-750 4x2 Terex C4047 Digger Derrick

\$ 96,500

Stock GDHE5296 VIN 3ALACXC8GDHE5296



Truck Specifications		Unit Specifications	
Year	2016	Attachment Year	2016
Make	Freightliner	Attachment Make	Terex
Model	M2106	Attachment Model	HRX55
Color	WHITE	Maximum Work	60
Cab Type	REGULAR CAB		
Chassis Class	CLASS 7 CHASSIS		
Engine Make	CUMMINS		
Engine Model	ISL		
Engine HP	270		
Transmission	M2106		
Transmission Speed	M2106		
FA Capacity	13220		
RA Capacity	21000		
Rear Axle Ratio	5.88		
Current Meter Reading	99686		
Engine Hours	8942		
Block Heater	YES		
Brakes	AIR		
Fuel Tank Capacity	50		
Rear Suspension	SPRING		
Engine Size	8.9		
Engine Fuel Type	Diesel		
Axle Config	4x2		
GVWR	33000		
Driver Seat	HIGH BACK AIR RIDE		
Frame	SINGLE		
Front Tire	11R22.5		
Rear Tire	11R22.5		
Power Locks	NO		
PTO Options	YES		
Radio	AM/FM		
Power Windows	MANUAL		
Passenger Seat	HIGH BACK FIXED		