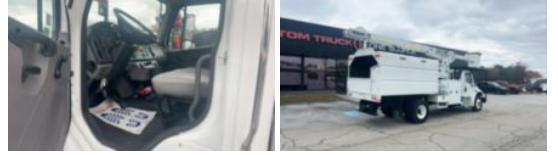


**2021 Freightliner M2106 4x2 Terex XT Pro 60-70 Forestry**
**\$ 165,500**

Stock MHMN0554 VIN 1FVACXFC9MHMN0554



| Truck Specifications  |                  | Unit Specifications |            |
|-----------------------|------------------|---------------------|------------|
| Year                  | 2021             | Attachment Year     | 2020       |
| Make                  | Freightliner     | Attachment Make     | Terex      |
| Model                 | M2106            | Attachment Model    | XTPRO60/70 |
| Color                 | WHITE            |                     |            |
| Cab Type              | REGULAR CAB      |                     |            |
| CA or CT              | 138              |                     |            |
| Chassis Class         | CLASS 7 CHASSIS  |                     |            |
| Engine Make           | CUMMINS          |                     |            |
| Engine Model          | B6.7 D           |                     |            |
| Engine HP             | 250              |                     |            |
| Transmission          | M2106            |                     |            |
| Transmission Speed    | M2106            |                     |            |
| FA Capacity           | 13300            |                     |            |
| RA Capacity           | 21000            |                     |            |
| Rear Axle Ratio       | 5.88             |                     |            |
| Wheelbase             | 207              |                     |            |
| Current Meter Reading | 27578            |                     |            |
| Engine Hours          | 3794             |                     |            |
| Block Heater          | YES              |                     |            |
| Brakes                | AIR              |                     |            |
| Fuel Tank Capacity    | 50               |                     |            |
| Rear Suspension       | SPRING           |                     |            |
| Engine Size           | 6.7              |                     |            |
| Engine Fuel Type      | Diesel           |                     |            |
| Axle Config           | 4x2              |                     |            |
| GVWR                  | 33000            |                     |            |
| Driver Seat           | HIGH BACK        |                     |            |
| Frame                 | SINGLE           |                     |            |
| Front Tire            | 11R22.5          |                     |            |
| Rear Tire             | 11R22.5          |                     |            |
| PTO Options           | YES              |                     |            |
| Radio                 | AM/FM            |                     |            |
| Passenger Seat        | TWO PERSON BENCH |                     |            |