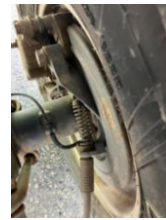


2019 Ford F-250 Crew Cab 4x4 Pickup Truck
Call for price

Stock KEF79558 VIN 1FT7W2B66KEF79558


Truck Specifications
Unit Specifications

Year	2019
Make	FORD
Model	F250
Cab Type	CREW CAB
Chassis Class	LightDuty
Engine Make	Ford
Engine Model	V8 6.2 Liter
Engine HP	383
Transmission	Auto
Transmission Speed	6
FA Capacity	5,600
RA Capacity	6,430
Rear Axle Ratio	3.73
Wheelbase	160
Current Meter Reading (mi)	107,531
Brakes	HYDRAULIC
Rear Suspension	Spring
Engine Size	6.2
Engine Fuel Type	Gasoline
Axle Config	4x4
GVWR (lb)	10,000
Frame	SINGLE
PTO Options	NO
Transmission Make	Ford
Running Condition	Running