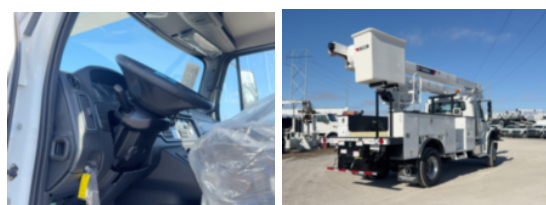


2027 Freightliner M2106 4x4 Terex Utilities TC55 Optima

\$ 256,900

Stock VDWW4222 VIN 3ALDCXFEXVDWW4222



Truck Specifications		Unit Specifications	
CARB Registered	No	Attachment Year	2026
Year	2027	Attachment Make	Terex Utilities
Make	Freightliner	Attachment Model	TC55 Optima
Model	M2106	Bed/Body Make	Falcon
Cab Type	REGULAR CAB	Bed/Body Model	FTETC55MU126UL
CA or CT	124	Maximum Work Height (ft)	60
Chassis Class	CLASS 7 CHASSIS		
Engine Make	CUMMINS		
Engine Model	L9 D		
Engine HP	300		
Transmission	Automatic		
Transmission Speed	6		
FA Capacity	14,000		
RA Capacity	21,000		
Wheelbase	190		
Brakes	AIR		
Rear Suspension	SPRING		
Engine Size	L9 D		
Engine Fuel Type	Diesel		
Axle Config	4x4		
GVWR (lb)	33,000		
Frame	SINGLE		
PTO Options	YES		