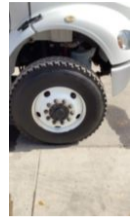


2015 Freightliner M2106 4x4 Terex C4047 Digger Derrick
\$ 92,015

Stock FDGJ8174 VIN 3ALDCXDT2FDGJ8174



| Truck Specifications | | Unit Specifications | |
|------------------------------|--------------------|-------------------------|----------------|
| Year | 2015 | Attachment Year | 2014 |
| Make | Freightliner | Attachment Make | Terex |
| Model | M2106 | Attachment Model | Commander 4047 |
| Color | WHITE | | |
| Cab Type | REGULAR CAB | | |
| Chassis Class | CLASS 7 CHASSIS | | |
| Engine Make | CUMMINS | | |
| Engine Model | ISB D | | |
| Engine HP | 250 | | |
| Transmission | M2106 | | |
| Transmission Speed | M2106 | | |
| FA Capacity | 14000 | | |
| RA Capacity | 21000 | | |
| Rear Axle Ratio | 5.57 | | |
| Wheelbase | 190 | | |
| Current Meter Reading | 67681 | | |
| Engine Hours | 6536 | | |
| Block Heater | YES | | |
| Brakes | AIR | | |
| Fuel Tank Capacity | 50 | | |
| Rear Suspension | SPRING | | |
| Engine Size | 6.7 | | |
| Engine Fuel Type | Diesel | | |
| Axle Config | 4x4 | | |
| GVWR | 33000 | | |
| Driver Seat | BENCH - FULL WIDTH | | |
| Frame | SINGLE | | |
| Front Tire | 12R22.5 | | |
| Rear Tire | 12R22.5 | | |
| PTO Options | YES | | |
| Radio | AM/FM | | |