



Custom Truck One Source

Kansas City, MO

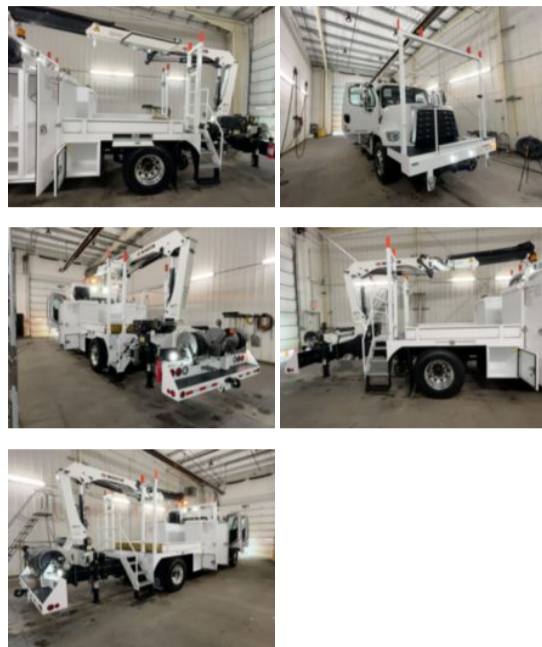
Phone: (816) 256-3200

<https://www.customtruck.com/locations>

2026 Freightliner 108SD 4x2 IMT 10/72SL K3 Hi-Rail

\$ 309,995

Stock THWU2789 VIN 1FVAG0FE5THWU2789



Hi-Rail Specifications		Unit Specifications	
Year	2026	Attachment Year	2024
Make	Freightliner	Attachment Make	IMT
Model	108SD	Attachment Model	10/72SL K3
Cab Type	CREW CAB	Bed/Body Make	C&S TECHNICAL
CA or CT	117	Bed/Body Model	CSE524MU117RR
Chassis Class	CLASS 7 CHASSIS		
Engine Make	CUMMINS		
Engine Model	L9 D		
Engine HP	300		
Transmission	Automatic		
Transmission Speed	6		
FA Capacity	13,000		
RA Capacity	21,000		
Wheelbase	229		
Brakes	AIR		
Rear Suspension	AIR		
Engine Size	L9 D		
Engine Fuel Type	Diesel		
Axle Config	4x2		
GVWR (lb)	33,000		
Frame	SINGLE		
PTO Options	YES		

DISCLAIMER: Price quoted includes any applicable FET. Quoted price is Ex Works and does not include any freight / delivery charges, sales tax, titling fees, or registration fees. Specifications are believed to be correct but may contain errors and/or omissions. Pictures are representative and may not be identical. Description and Images Custom Truck One Source