



**Custom Truck One Source**

Kansas City, MO

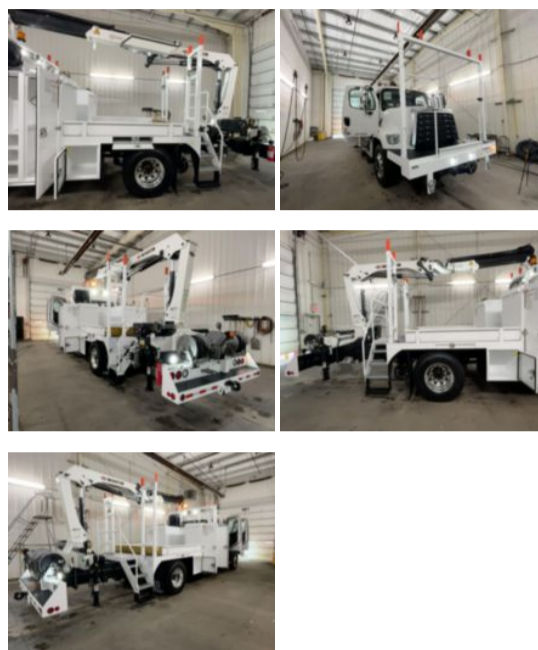
Phone: (816) 256-3200

<https://www.customtruck.com/locations>

**2026 Freightliner 108SD 4x2 IMT 10/72SL K3 Hi-Rail**

**\$ 309,995**

Stock THWU2790 VIN 1FVAG0FE1THWU2790



Hi-Rail Specifications		Unit Specifications	
<b>Year</b>	2026	<b>Attachment Year</b>	2024
<b>Make</b>	Freightliner	<b>Attachment Make</b>	IMT
<b>Model</b>	108SD	<b>Attachment Model</b>	10/72SL K3
<b>Cab Type</b>	CREW CAB	<b>Bed/Body Make</b>	C&S TECHNICAL
<b>CA or CT</b>	117	<b>Bed/Body Model</b>	CSE524MU117RR
<b>Chassis Class</b>	CLASS 7 CHASSIS		
<b>Engine Make</b>	CUMMINS		
<b>Engine Model</b>	L9 D		
<b>Engine HP</b>	300		
<b>Transmission</b>	Automatic		
<b>Transmission Speed</b>	6		
<b>FA Capacity</b>	13,000		
<b>RA Capacity</b>	21,000		
<b>Wheelbase</b>	229		
<b>Brakes</b>	AIR		
<b>Rear Suspension</b>	AIR		
<b>Engine Size</b>	L9 D		
<b>Engine Fuel Type</b>	Diesel		
<b>Axle Config</b>	4x2		
<b>GVWR (lb)</b>	33,000		
<b>Frame</b>	SINGLE		
<b>PTO Options</b>	YES		

DISCLAIMER: Price quoted includes any applicable FET. Quoted price is Ex Works and does not include any freight / delivery charges, sales tax, titling fees, or registration fees. Specifications are believed to be correct but may contain errors and/or omissions. Pictures are representative and may not be identical. Description and Images Custom Truck One Source