



# 2016 Hogg & Davis ODP 40 Single Drum Puller

Equipment#: G0121519

## EQUIPMENT SPECS

### UNIT INFORMATION

S/N: 1H91E2222G1011059

Hours: 318

Continuous Line-Pull Rating: 4,000 LBS.

Continuous Torque Rating: 88,000 IN-LB

Infinitely Variable Speed From 0.0 – 4.0 MPH

Rated Diameter: 44"

Width: 40"

Reel Rope Capacity: 15,500 Feet (5/8" Diameter)

Closed Loop Hydra-Static Drive

Spring Applied, Hydraulic Release Drive Train Brake

Mechanical Clutch Engagement on Drive Motor

Freewheel Disconnect Standard on Drum

16" Diameter Vented Bronze Overspin Brake on Drum

Length: 16' 6"

Width: 8' 2"

Height: 8' 1"

Weight (Curb): 10,720 LBS.

Tires: 235/75/17.5

Adjustable Pintle Hitch

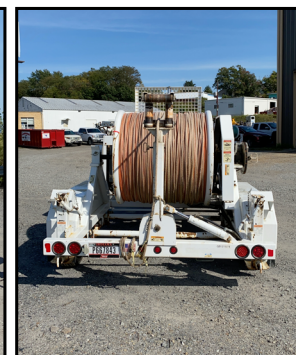
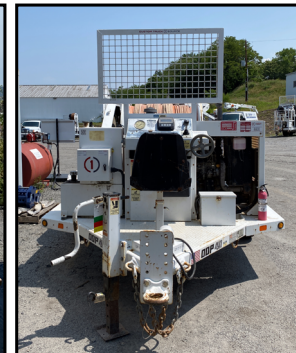
GVRWR: 7,000 LBS.

### ENGINE

Yanmar TNV - Diesel

SN#: U7079

46.6 HP



### WHOLESALE DISCLAIMER:

These sale units are being sold "AS IS - WHERE IS" and "WITH ALL FAULTS". CTOS HEREBY EXPRESSLY DISCLAIMS ALL WARRANTIES, EITHER EXPRESS OR IMPLIED, INCLUDING ANY WARRANTY OF THE MERCHANTABILITY OR FITNESS FOR A PARTICULAR PURPOSE, and neither assumes nor authorizes any other person to assume for it any liability in connection with the sale of this unit.

These units have been in CTOS's rental fleet, but may not be "rent-ready" and have not gone through CTOS' typical rent-ready inspection process, which may include a DOT inspection, routine maintenance and service, etc..

Purchaser may request an inspection and service for these units, but such inspection and service will be additional cost and will be quoted on a time and materials basis.

Potential purchasers are advised to inspect the units in person as CTOS will only share photos as available and per request.

Unit Being Sold AS-IS/WHERE-IS

888-684-8146

[www.customtruck.com](http://www.customtruck.com)

ASK ABOUT THE CUSTOMIZED AND FLEXIBLE LEASING & FINANCING SOLUTIONS AVAILABLE FROM CUSTOM TRUCK CAPITAL

DISCLAIMER: Specifications are believed to be correct, but may contain errors and/or omissions. Pictures are representative and may not be identical.

Click / Scan For Info



WHOLESALE PRICE: \$23,990

STOCK#: G1011059

EX WORKS: Wilkes-Barre ,PA

QUOTE NUMBER: PB2.06-I\_23 RQR2

EXPIRATION DATE: 6/30/2024