



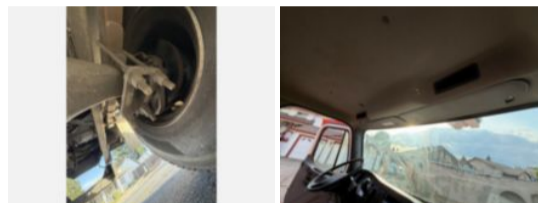
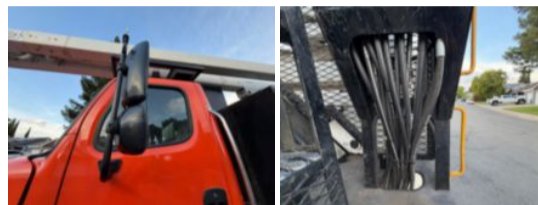
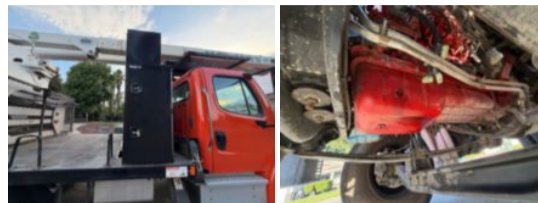
**Custom Truck One Source**

Yuba City,  
 Phone: (866) 411-2293  
<https://www.customtruck.com/locations>

**2023 Freightliner M2 4x2 Terex XT60/70RM Pro Forestry**

**\$ 135,000**

Stock PHNZ1189 VIN 1FVACWFD5PHNZ1189



Truck Specifications		Unit Specifications	
<b>Year</b>	2023	<b>Attachment Make</b>	Terex
<b>Make</b>	FREIGHTLINER	<b>Attachment Model</b>	XTPro/60-70
<b>Model</b>	M2		
<b>Chassis Class</b>	Truck		
<b>Engine Make</b>	Cummins		
<b>Engine Model</b>	B6.7L		
<b>Engine HP</b>	250		
<b>Transmission</b>	Auto		
<b>Transmission Speed</b>	6		
<b>FA Capacity</b>	12,000		
<b>RA Capacity</b>	21,000		
<b>Rear Axle Ratio</b>	6.14		
<b>Wheelbase</b>	166		
<b>Current Meter Reading (mi)</b>	25,214		
<b>Fuel Tank Capacity (gal)</b>	50		
<b>Rear Suspension</b>	Air Ride		
<b>Engine Fuel Type</b>	Diesel		
<b>GVWR (lb)</b>	26,000		
<b>Frame</b>	Steel		
<b>Transmission Make</b>	Allison		

DISCLAIMER: Price is an estimation and does not include any freight/delivery charges, sales tax, titling fees, or registration fees. 8% buyer's fee applies on all purchases. Price is subject to change. Specifications are believed to be correct but may contain errors and/or omissions. Pictures shown represent the state of the vehicle at the time of the third-party, non-bias inspection. Unit is being sold AS-IS, WHERE-IS.