

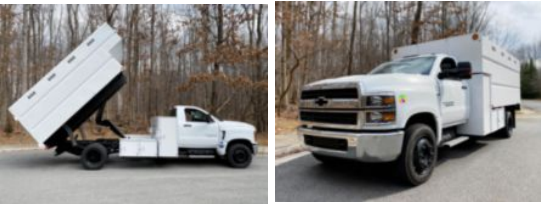
2022 Chevrolet 6500 4x2 Southco Chip Truck

\$ 89,000

Stock

NH392829

VIN 1HTKHPVM5NH392829



| Truck Specifications | | Unit Specifications | |
|----------------------|-----------------|---------------------|------------------|
| Year | 2022 | Attachment Year | 2022 |
| Make | Chevrolet | Bed/Body Make | Southco |
| Model | 6500 | Bed/Body Model | Custom Chip Body |
| Cab Type | REGULAR CAB | | |
| CA or CT | 108 | | |
| Chassis Class | CLASS 6 CHASSIS | | |
| Engine Make | DURAMAX | | |
| Engine Model | 6.6L D | | |
| Engine HP | 350 | | |
| Transmission | Automatic | | |
| Transmission Speed | 6 | | |
| FA Capacity | 8000 | | |
| RA Capacity | 15500 | | |
| Wheelbase | 189 | | |
| Brakes | HYDRAULIC | | |
| Rear Suspension | SPRING | | |
| Engine Size | 6.6 | | |
| Engine Fuel Type | Diesel | | |
| Axle Config | 4x2 | | |
| GVWR | 22500 | | |
| Frame | SINGLE | | |
| PTO Options | YES | | |