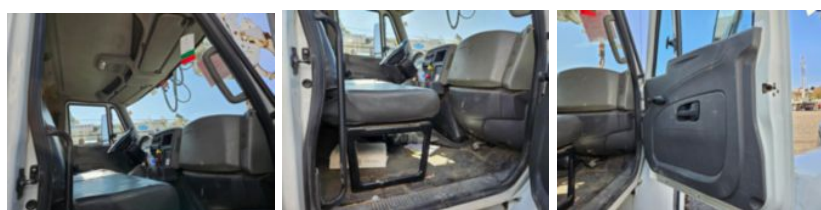


**2012 Terex Commander 4047 / 2012 International 4300**
**Call for price**

Stock CL439299 VIN 3HAMMAAN9CL439299



Truck Specifications		Unit Specifications	
<b>Year</b>	2012	<b>Attachment Year</b>	2012
<b>Make</b>	INTERNATIONAL	<b>Attachment Make</b>	Terex
<b>Model</b>	4300	<b>Attachment Model</b>	Commander 4047
<b>Color</b>	WHITE		
<b>Cab Type</b>	REGULAR CAB		
<b>Chassis Class</b>	Truck		
<b>Engine Make</b>	International		
<b>Engine Model</b>	DT 7.6L		
<b>Engine HP</b>	245		
<b>Transmission Make</b>	Allison		
<b>Transmission</b>	Auto		
<b>Transmission Speed</b>	5		
<b>FA Capacity</b>	13000		
<b>RA Capacity</b>	20000		
<b>Rear Axle Ratio</b>	5.57		
<b>Wheelbase</b>	187		
<b>Current Meter Reading</b>	75272		
<b>Engine Hours</b>	5925		
<b>Block Heater</b>	YES		
<b>Brakes</b>	AIR		
<b>Fuel Tank Capacity</b>	50		
<b>Rear Suspension</b>	Spring		
<b>Engine Size</b>	MAXXFORCE DT D		
<b>Engine Fuel Type</b>	Diesel		
<b>Axle Config</b>	4x2		
<b>GVWR</b>	33000		
<b>Driver Seat</b>	BENCH - FULL WIDTH		
<b>Frame</b>	Steel		
<b>Front Tire</b>	11R22.5		
<b>Rear Tire</b>	11R22.5		
<b>PTO Options</b>	YES		
<b>Radio</b>	AM/FM		