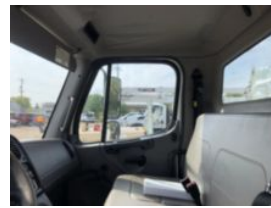
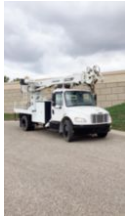
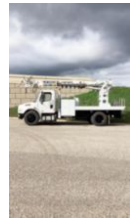
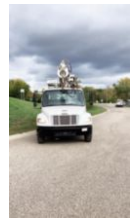


2015 Freightliner M2106 4x2 Terex Commander 4047

\$ 86,625

Stock FDGB1616 VIN 3ALACXDT8FDGB1616



Truck Specifications		Unit Specifications	
Year	2015	Attachment Year	2014
Make	Freightliner	Attachment Make	Terex
Model	M2106	Attachment Model	Commander 4047
Color	WHITE		
Cab Type	REGULAR CAB		
Chassis Class	CLASS 7 CHASSIS		
Engine Make	CUMMINS		
Engine Model	ISB D		
Engine HP	250		
Transmission	M2106		
Transmission Speed	M2106		
FA Capacity	12000		
RA Capacity	21000		
Rear Axle Ratio	6.43		
Wheelbase	189		
Current Meter Reading	59342		
Engine Hours	2432		
Block Heater	YES		
Brakes	AIR		
Fuel Tank Capacity	50		
Rear Suspension	SPRING		
Engine Size	6.7		
Engine Fuel Type	Diesel		
Axle Config	4x2		
GVWR	33000		
Driver Seat	BENCH - FULL WIDTH		
Frame	SINGLE		
Front Tire	11R22.5		
Rear Tire	11R22.5		
Power Locks	NO		
PTO Options	YES		
Radio	AM/FM		
Power Windows	NO		