



**Custom Truck One Source**

Lynchburg, VA

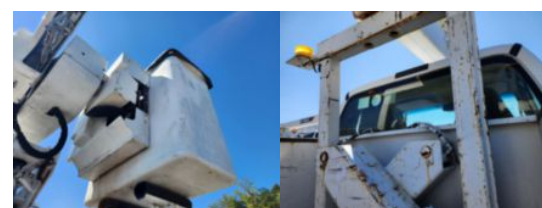
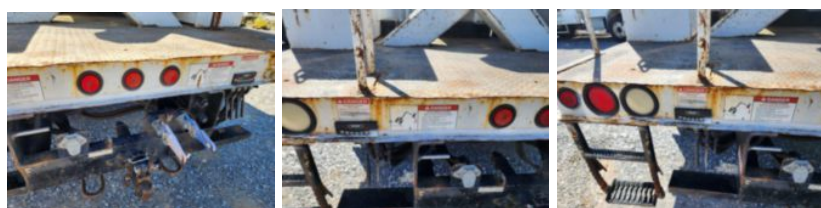
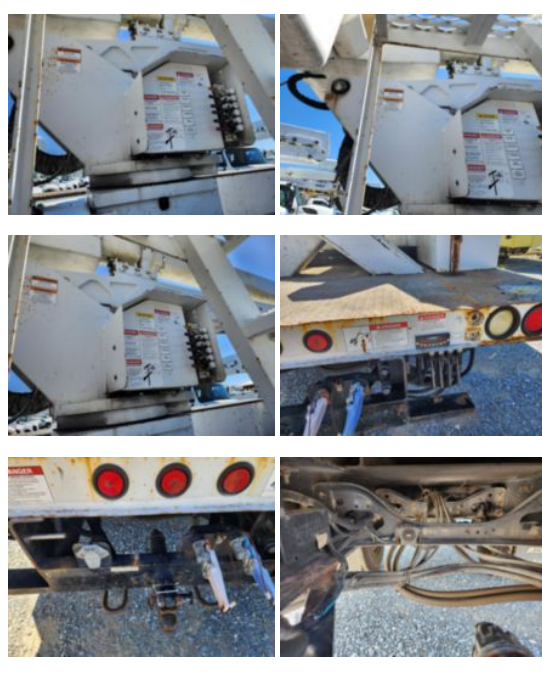
Phone: 866-411-2293

<https://www.customtruck.com/locations>

**2009 Ford F750 4x2 Terex HRX55 Bucket Truck**

**\$ 45,000**

Stock 9V127592 VIN 3FRXF75HX9V127592



Truck Specifications		Unit Specifications	
Year	2009	Attachment Year	2008
Make	FORD	Attachment Make	Terex
Model	F750	Attachment Model	HRX55
Color	WHITE	Maximum Work	60
Cab Type	REGULAR CAB		
Chassis Class	Truck		
Engine Make	Cummins		
Engine Model	ISB 6.7L		
Engine HP	260		
Transmission Make	Allison		
Transmission	Auto		
Transmission Speed	5		
FA Capacity	13200		
RA Capacity	20000		
Rear Axle Ratio	5.29		
Wheelbase	194		
Current Meter Reading	86246		
Engine Hours	9935		
Block Heater	YES		
Brakes	AIR		
Fuel Tank Capacity	45		
Rear Suspension	Spring		
Engine Size	6.7		
Engine Fuel Type	Diesel		
Axle Config	4x2		
GVWR	33000		
Driver Seat	HIGH BACK AIR RIDE		
Frame	Steel		
Front Tire	11R22.5		
Rear Tire	11R22.5		
PTO Options	YES		
Radio	AM/FM		
Passenger Seat	TWO PERSON BENCH		

DISCLAIMER: Price is an estimation and does not include any freight/delivery charges, sales tax, titling fees, or registration fees. 8% buyer's fee applies on all purchases. Price is subject to change. Specifications are believed to be correct but may contain errors and/or omissions. Pictures shown represent the state of the vehicle at the time of the third-party, non-bias inspection. Unit is being sold AS-IS, WHERE-IS.