



2016 Condux AFS404 Puller Tensioner

Equipment# 216289

CHASSIS SPECS

UNIT INFORMATION

VIN: 1C9HU1827G0032225

Max Pull: 1,350 to 10,100 Lbs-Ft

Max Speed: 3.1 MPH

Max Tension: 1,350 to 10,100 Lbs-Ft

Low Tension Mode: 350 Lbs to 1,800 Lbs

Bullwheel Diameter: 59 1-16"

(2) 60" Bullwheels with 8 Grooves

Max Wire Size: 1590

Max Conductor Diameter: 1 5-16" (T2 Sector Option)

ENGINE

Cummins B3.3L

S/N: 72020372

Hours: 1,687

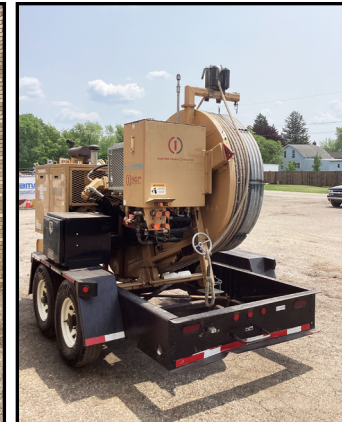
BRAKES

Electric

TIRES/WHEELS

Tires: 215/75R17.5

Wheels: Aluminum



WHOLESALE DISCLAIMER:

These sale units are being sold "AS IS - WHERE IS" and "WITH ALL FAULTS". CTOS HEREBY EXPRESSLY DISCLAIMS ALL WARRANTIES, EITHER EXPRESS OR IMPLIED, INCLUDING ANY WARRANTY OF THE MERCHANTABILITY OR FITNESS FOR A PARTICULAR PURPOSE, and neither assumes nor authorizes any other person to assume for it any liability in connection with the sale of this unit.

These units have been in CTOS's rental fleet, but may not be "rent-ready" and have not gone through CTOS' typical rent-ready inspection process, which may include a DOT inspection, routine maintenance and service, etc..

Purchaser may request an inspection and service for these units, but such inspection and service will be additional cost and will be quoted on a time and materials basis. Potential purchasers are advised to inspect the units in person as CTOS will only share photos and service reports as available and per request.

Ask About Our Preferred Transportation Vendors

888-684-8146

www.customtruck.com

ASK ABOUT THE CUSTOMIZED AND FLEXIBLE LEASING & FINANCING SOLUTIONS AVAILABLE FROM CUSTOM TRUCK CAPITAL

DISCLAIMER: Specifications are believed to be correct, but may contain errors and/or omissions. Pictures are representative and may not be identical.

Click / Scan For Info



PRICE: \$54,266

STOCK#: G0032225

EX WORKS: Canton, OH

QUOTE NUMBER: KR1.14-G_23 RQR2

EXPIRATION DATE: 12/31/2023