



## Custom Truck One Source

Wilkes-Barre, PA

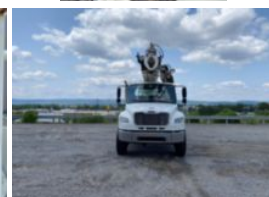
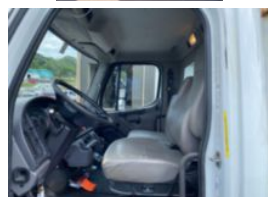
Phone: (800) 252-0043

<https://www.customtruck.com/locations>

### 2014 Freightliner M2106

**\$ 158,500**

Stock EDFK9947 VIN 3ALKCYCY1EDFK9947



#### Detailed Specification

|                              |                    |                            |                    |
|------------------------------|--------------------|----------------------------|--------------------|
| <b>Attachment Year</b>       | 2013               | <b>Axle Config</b>         | 6x6                |
| <b>Block Heater</b>          | YES                | <b>Brakes</b>              | AIR                |
| <b>Cab Type</b>              | REGULAR CAB        | <b>Characteristic Type</b> | 60' DIGGER DERRICK |
| <b>Current Meter Reading</b> | 37702.000000       | <b>Engine Hours</b>        | 4458.000000        |
| <b>Engine Hp</b>             | 300                | <b>Engine Make</b>         | CUMMINS            |
| <b>Engine Model</b>          | ISL D              | <b>FA Capacity</b>         | 16000              |
| <b>Fuel Tank Capacity</b>    | 50                 | <b>RA Capacity</b>         | 40000              |
| <b>Rear Axle Ratio</b>       | 5.86               | <b>Rear End Ratio</b>      | 5.86               |
| <b>Rear Suspension</b>       | HENDRICKSON RT 403 | <b>Transmission</b>        | Automatic          |
| <b>Transmission Model</b>    | 3500RDS            | <b>Transmission Speed</b>  | 6                  |
| <b>Wheelbase</b>             | 208                |                            |                    |

DISCLAIMER: Price quoted includes any applicable FET. Quoted price is Ex Works and does not include any freight / delivery charges, sales tax, titling fees, or registration fees. Specifications are believed to be correct but may contain errors and/or omissions. Pictures are representative and may not be identical. Description and Images Custom Truck One Source