



Custom Truck One Source

Forest, VA

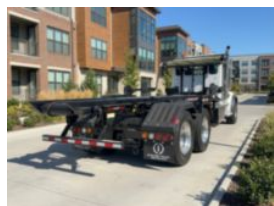
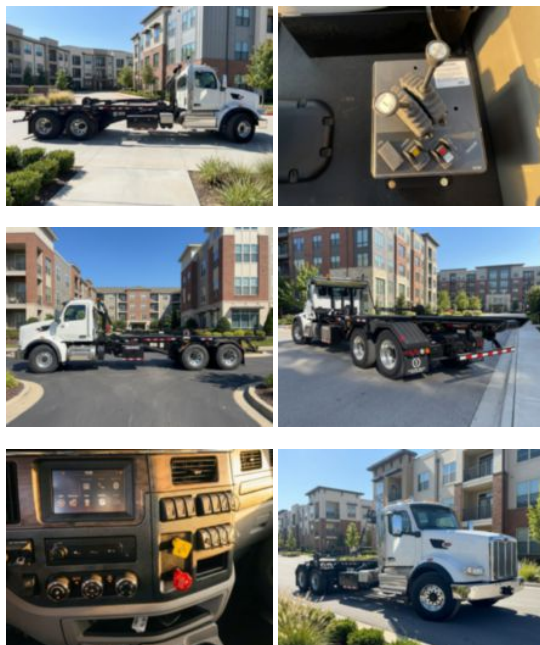
Phone: (816) 256-3200

<https://www.customtruck.com/locations>

2025 Peterbilt 567 6x4 Galbreath U5-OR-174 Roll-Off Truck

\$ 260,945

Stock SD743035 VIN 1NPCL40XXSD743035



| Truck Specifications | | Unit Specifications | |
|---------------------------|-----------------|---|-----------|
| CARB Registered | No | Attachment Year | 2024 |
| Year | 2025 | Attachment Make | Galbreath |
| Make | Peterbilt | Attachment Model | U5-OR-174 |
| Model | 567 | Rolloff Capacity (lb) | 60000 |
| Cab Type | REGULAR CAB | Roll Off Maximum Container Length (ft) | 22 |
| CA or CT | 192 | Roll Off Minimum Container Length (ft) | 18 |
| Chassis Class | CLASS 8 CHASSIS | | |
| Engine Make | CUMMINS | | |
| Engine Model | X15 D | | |
| Engine HP | 450 | | |
| Transmission | Automatic | | |
| Transmission Speed | 6 | | |
| FA Capacity | 20,000 | | |
| RA Capacity | 46,000 | | |
| Wheelbase | 266 | | |
| Brakes | AIR DISC | | |
| Rear Suspension | HMXEX460 | | |
| Engine Size | 14.9 | | |
| Engine Fuel Type | Diesel | | |
| Axle Config | 6x4 | | |
| GVWR (lb) | 66,000 | | |
| Frame | DOUBLE | | |
| PTO Options | YES | | |

DISCLAIMER: Price quoted includes any applicable FET. Quoted price is Ex Works and does not include any freight / delivery charges, sales tax, titling fees, or registration fees. Specifications are believed to be correct but may contain errors and/or omissions. Pictures are representative and may not be identical. Description and Images Custom Truck One Source