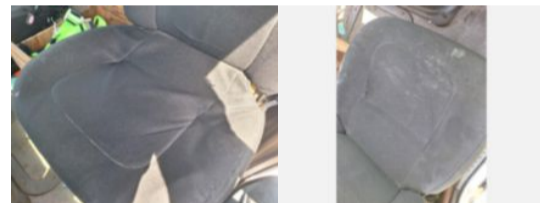


2008 Sterling Acterra Tandem Axle Simon-Telelect 55'
Call for price

Stock 8AZ06628 VIN 2FZHCHBS28AZ06628



Truck Specifications		Unit Specifications	
Year	2008	Attachment Make	HLPCO
Make	STERLING	Attachment Model	75'
Model	Acterra		
Chassis Class	LightDuty		
Engine Make	Cummins		
Engine Model	ISC - EPA07		
Engine HP	300		
Transmission	Auto		
Transmission Speed	6		
FA Capacity	16,000		
RA Capacity	40,000		
Rear Axle Ratio	5.86		
Wheelbase	219		
Current Meter Reading (mi)	66,347		
Fuel Tank Capacity (gal)	60		
Rear Suspension	Air Ride		
Engine Fuel Type	Diesel		
GVWR (lb)	56,000		
Transmission Make	Allison		
Running Condition	Running		