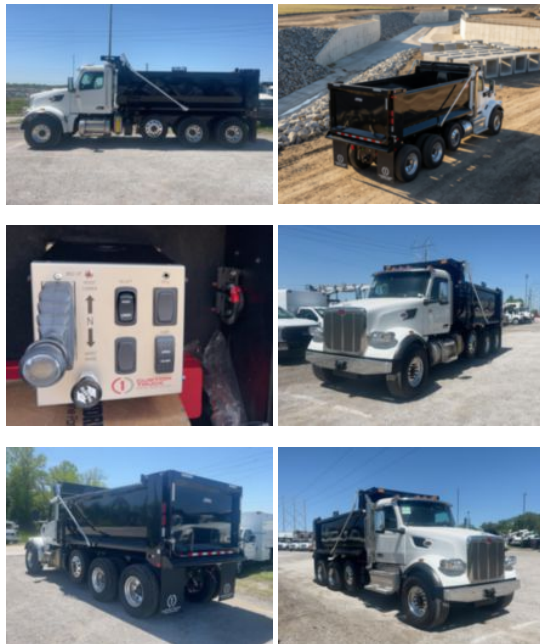


2026 Peterbilt 567 8x4 Dump Truck
\$ 249,784

Stock TD809817 VIN 1NPCX4EX0TD809817



Truck Specifications		Unit Specifications	
CARB Registered	No	Attachment Year	2026
Year	2026	Bed/Body Make	Load King
Make	Peterbilt	Bed/Body Model	LKXD16X543/16DB
Model	567	Dump Body Length (ft)	16
Cab Type	REGULAR CAB	Dump Body Type	Elliptical
CA or CT	141	Dump Load (cu yd)	20
Chassis Class	CLASS 8 CHASSIS		
Engine Make	CUMMINS		
Engine Model	X15 D		
Engine HP	525		
Transmission	Automatic		
Transmission Speed	6		
FA Capacity	20,000		
RA Capacity	46,000		
Wheelbase	231		
Brakes	AIR		
Pusher Axle(s)	(1) 13.5K S		
Rear Suspension	HENDRICKSON HMX460		
Engine Size	14.9		
Engine Fuel Type	Diesel		
Axle Config	8x4		
GVWR (lb)	79,500		
Frame	SINGLE		
PTO Options	YES		