



2021 Ram 5500 4x4 Knapheide Service Truck With Crane

CHASSIS SPECS

UNIT INFORMATION
VIN: 3C7WRNBL4MG662317
Dash: 155,015 Miles
Single Axle
Hydraulic Brakes
Single Frame
Hitch Receiver

CAB FEATURES
Standard Daycab
Tow Mirrors
City Horn

INTERIOR FEATURES
Mid Level Interior
A/C Equipped
Power Windows
Power Door Locks
High Back Adjustable Driver Seat
High Back Adjustable Passenger Seat
Cruise Control
AM/FM
Bluetooth
Tilt Steering Column

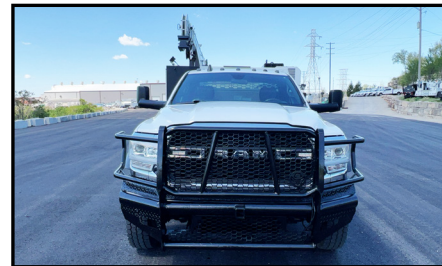
GVWR
19,500 Lbs.
FRONT AXLE
7,250 Lbs. FAWR
REAR AXLE(S)
13,500 Lbs. RAWR
Ratio: 4.44
REAR SUSPENSION
Spring
ENGINE
Cummins 6.7L
360 Horsepower
Dash: 5,764 Hours
RH Horizontal Exhaust
TRANSMISSION
Automatic W/OD
TIRES/WHEELS
Front Tire: 245/70R19.5
Front Wheel: Steel
Rear Tire: 245/70R19.5
Rear Wheel: Steel
FUEL TANK(S)
52 Gallon Fuel Tank
DEF Tank

EQUIPMENT SPECS

2021 Knapheide Service Body
Model: 6132DLR-44K-R
S/N: 20210601-0744983
LH (4) Tool Cabinets
RH (4) Tool Cabinets
Rear Hydraulic Outriggers
Tail Shelf W/ Step

Stellar 7621 Crane
S/N: FHB21F5344
Retracted Length: 11 Ft.
Max. Vertical Lift: 22 Ft. 11 In.
Max. Horizontal Reach: 21 Ft.
7,500 Lbs. @ 5 Ft. 10 In.
Remote

Miller Bobcat 250
AC/DC Welder
11,000 Watt Generator
Hours: 214



**Unit Being Sold AS-IS/WHERE-IS
Qualifies For An Extended Warranty
See Pages 2-3 For More Info**

888-684-8146 www.customtruck.com

ASK ABOUT THE CUSTOMIZED AND FLEXIBLE LEASING & FINANCING SOLUTIONS AVAILABLE FROM CUSTOM TRUCK CAPITAL
DISCLAIMER: Specifications are believed to be correct, but may contain errors and/or omissions. Pictures are representative and may not be identical.

Click / Scan For Info



PRICE: \$104,500
STOCK#: MG662317
EX WORKS: Kansas City, MO

QUOTE NUMBER: BN2.19-A_26 Tier A EXPIRATION DATE: 12/31/2026



Specialty Trucks Warranty

RETAIL
Rates As Of November 16, 2020

CLASS 3-8, up to 20 years including the current calendar year; start miles <900K for Agriculture High Mileage Vehicles; <400K for All Other Vehicles.

Each Warranty Program Includes:

Engine, Critical Components (turbo, fuel injectors, fuel pump, water pump, ECM), Transmission and Rear Differential.

TRUCKS FROM RENTAL FLEETS	Class 3-5	Class 6-8
24 Months / 50,000 Miles	\$2,600	\$3,000
TRUCKS SOURCED OUTSIDE RENTAL FLEETS	Class 3-5	Class 6-8
12 Months / 25,000 Miles	\$2,400	\$2,700
12 Months / 50,000 Miles	\$2,800	\$3,200
24 Months / 50,000 Miles	\$3,000	\$3,500
24 Months / 100,000 Miles	\$3,500	\$4,000
AGRICULTURAL - LOW MILES <small>(Financed by Custom Trucks)</small>	Class 3-5	Class 6-8
12 Months / 20,000 Miles	\$2,100	\$2,300
24 Months / 20,000 Miles	\$2,300	\$2,600
36 Months / 30,000 Miles	\$2,500	\$3,000
AGRICULTURAL - HIGH MILES	Class 3-5	Class 6-8
12 Months / 10,000 Miles	\$2,200	\$2,500
24 Months / 20,000 Miles	\$2,400	\$2,700

\$350 deductible per occurrence

Additional coverage options

Aftertreatment
(must match warranty term)

12 Months \$950
24 Months **\$1,250**
36 Months \$1,550

Comfort Package
(must match warranty term)

12 Months \$799
24 Months **\$950**
36 Months \$1,100

Rates as of November 16, 2020

See contract for all details. See back for coverage summary. All costs are in US dollars.



Specialty Trucks Warranty

CLASS 3-8, up to 20 years including the current calendar year; start miles <900K for Agriculture High Mileage Vehicles; <400K for All Other Vehicles.

Covered Components Summary

CC = Included in Critical Components
LOL = Limits of Liability

Coverage Exclusions: Please refer to your contract for complete list and details of covered and non-covered items.

Engine (LOL: \$15,000 for Class 3-5; \$22,500 for Class 6-8)

Engine's internally lubricated hard parts include:

- Camshaft and Cam Bearings
- Cam Followers
- Connecting Rods
- Connecting Rod Bearings
- Connecting Rod Caps and Screws
- Crankshaft
- Cylinder Block Casting
- Cylinder Head
- Cylinder Head Gasket
- Cylinder Liners
- Cylinder Head Bolts
- Hydraulic Lifters
- Injector Cups
- Intake and Exhaust Valves
- Intake and Exhaust Valve Guides
- Main Bearings
- Oil Cooler and Housing
- Oil Pan
- Oil Pump Pick Up Screen
- Oil Pump Pick Up Tube*
- Oil Pump Pressure Relief Springs and Valves
- Pistons, Piston Rings, and Piston Oil Cooling Jets
- Pushrods
- Rocker Arms and Rocker Arm Shafts
- Thrust Washers
- Timing Gears
- Timing Gear Cover and Housing
- Valve Cover
- Valve Retainers and Keepers (Locks)
- Valve Seats
- Valve Springs
- Wrist Pins

*"Non-oil" related components:

- Exhaust Manifold
- Thermostat Housing
- Flywheel Housing
- Vibration Dampener
- Intake Manifold

* For Detroit Diesels, breakdowns originating from the "oil pump pick up tube O-ring" will only be covered if the TSB D18M3 has been performed by a certified OEM repair shop.

(CC) Turbo (LOL \$7,500)

Turbochargers include:

- Bearings
- Internal Variable Vane Assembly
- Turbine and Turbine Shaft
- Turbo Actuator

Transmission

(LOL: \$6,000 for Class 3-5; \$7,500 for Class 6-8)

Internally lubricated hard parts of the manual or automatic transmission include:

- Bands
- Bearings
- Blockers
- Bushings
- Drums
- Gear Sets
- Governor
- Oil Pump
- Shaft(s)
- Shift Forks
- Synchronizers
- Thrust Washers
- Torque Converter
- Valve Body

Differential

(LOL: \$6,000 for Class 3-5; \$7,500 for Class 6-8)

Internally lubricated hard parts include:

- Axle Housing
- Axle Shafts
- Bearings
- Bushings
- Carrier Case
- Gear Sets
- Limited Slip Clutch Pack

Power divider includes:

- Bearings
- Gears
- Shafts
- Shift Forks

(CC) Engine Fuel Injectors, Water Pump, Fuel Pump & ECM

(LOL \$5,000)

Covered Components:

- Complete Injector
- Fuel Injector Hard Lines
- Fuel Injection Pump
- Fuel Pump
- Engine Control Module (ECM)
- Water Pump

Progressive Damage, Wearout & Carbon Packing

Please refer to your contract for details on Progressive Damage, Wearout and Carbon Packing coverage.

Eligibility

- Class 3-8: Start miles up to 900,000 miles (on odometer or ECM), whichever is greater, for Agriculture High Mileage Vehicles and up to 400,000 miles for All Other Vehicles
- Class 3-5 warranty expiration capped at 500,000 total miles
- Class 6-8 warranty expiration capped at 1,000,000 total miles
- Model age must be 20 years from current year or newer

Aftertreatment, Model Year 2014 & Older (LOL: \$7,000 for Class 3-5; \$8,000 for Class 6-8)

Covered Components:

- Aftertreatment Electronic Control Module (ACM)
- Diesel Exhaust Fluid (DEF) Module with Injection Nozzle
- DEF Tank
- Diesel Oxidation Catalyst (DOC)
- DOC Doser Injector
- Diesel Particulate Filter (DPF)
- DPF Dosing Module
- Exhaust Gas Recirculation (EGR) Valves
- EGR Cooler(s)
- Hydrocarbon Doser Injector (HC Doser, 7th Injector, ARD, AHI Module)
- Selective Catalytic Reduction (SCR) Catalyst
- Sensor, Lambda (O₂ Sensor)
- Sensor, NOx (2)

Comfort Package (LOL \$6,000)

- Alternator
- Charge Air Cooler
- Engine Air Compressor
- Fan Clutch
- Fuel Tanks, Cap, & Valve
- HVAC Air Compressor & Pulley
- HVAC Blower Motor & Resistor
- HVAC Fan Hub
- HVAC Heater Core
- HVAC Temperature Controls, Control Head, & Control Valves
- Radiator & Radiator Cap
- Radio
- Starter & Starter Solenoid

Aftertreatment, Model Year 2015 & Newer (LOL: \$7,000 for Class 3-5; \$8,000 for Class 6-8)

Covered Components:

- Aftertreatment Electronic Control Module (ACM)
- Back Pressure Control Valve (BPV)
- Diesel Exhaust Fluid (DEF) Module with Injection Nozzle
- DEF Heater Control Relay
- DEF Dosing Module - Wiring Harness
- DEF Heated Lines (3)
- DEF Heater Coolant Control Valve
- DEF Heating Elements
- DEF Heating Fittings (3 on Supply Module)
- DEF Pump and Module
- DEF Solution Level/Temperature Sensor
- DEF Tank
- Diesel Oxidation Catalyst (DOC)
- Diesel Particulate Filter (DPF)
- DPF Air, Fuel, and Coolant Lines
- DPF Air, Fuel, Manifold Assembly
- DPF Dosing Module
- Exhaust Gas Recirculation (EGR) Valves
- EGR Actuator
- EGR Connecting Bellows and Clamps
- EGR Cooler(s)
- Exhaust Piping, Clamps, and Gaskets
- Exhaust Throttle Valve
- Hydrocarbon Doser Injector (HC Doser, 7th Injector, ARD, AHI Module)
- Hydrocarbon Doser Valve - Air, Fuel, and Coolant Lines; and Inline Air Filter
- Hydrocarbon Doser Valve (Voss Valve)
- Selective Catalytic Reduction (SCR) Catalyst
- SCR Decomposition Pipe and Pipe Elbows
- Sensor, BPV Pressure
- Sensor, Delta P (DPF Pressure)
- Sensor, DOC Inlet Pressure
- Sensor, DOC (Post) Temperature
- Sensor, DOC (Pre) Temperature
- Sensor, DPF Air Supply Pressure
- Sensor, DPF Back Pressure
- Sensor, DPF Fuel Pressure
- Sensor, Lambda (O₂ Sensor)
- Sensor, NOx (2)
- Sensor, Pressure After Exhaust Throttle Valve
- Sensor, SCR (Post) Temperature
- Sensor, SCR (Pre) Temperature
- Wiring Harness - Emission Systems (including overlay)

Underwriting

- Continuing OEM maintenance recommendations must be followed
- Check fault codes & perform preventative maintenance
- Visual inspection of warranted components: identify leaks at seals, gaskets, and housing; verify engine performance (i.e. skips, misses, knocking, etc.)
- Road test /performance evaluation to identify performance & operational issues
- Repair identified deficiencies to maintain ROs of related underwriting repairs
- Wrap coverage begins at expiration of prior OEM coverage (by age or mileage)
- New engine oil and filter required