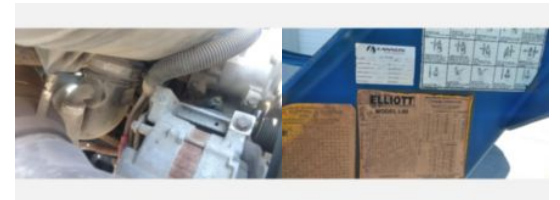
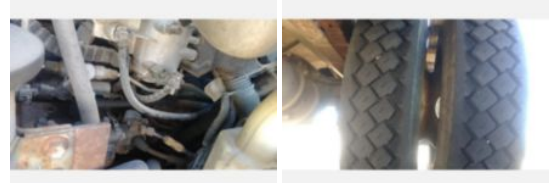
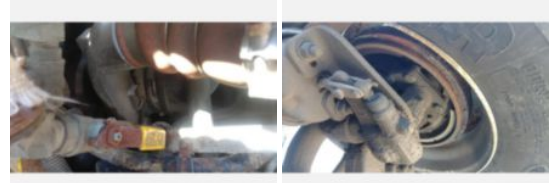


2009 Int'l 4300 Extended Cab Elliott L-60 Aerial Lift Truck

Call for price

Stock 9h101174 VIN 1htmmaan09h101174



Truck Specifications		Unit Specifications	
Year	2009	Attachment Make	Elliott
Make	INTERNATIONAL	Attachment Model	L60
Model	4300		
Chassis Class	Truck		
Engine Make	International		
Engine Model	MAXXFORCE DT		
Engine HP	245		
Transmission	Auto		
Transmission Speed	5		
FA Capacity	13,000		
RA Capacity	20,000		
Rear Axle Ratio	5.57		
Wheelbase	213		
Current Meter Reading (mi)	168,870		
Fuel Tank Capacity (gal)	70		
Rear Suspension	Spring		
Engine Fuel Type	Diesel		
GVWR (lb)	33,000		
Frame	Steel		
Transmission Make	Allison		
Running Condition	Running		