



# Custom Truck One Source

Bluffton, IN

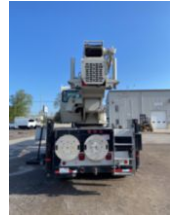
Phone: (877) 547-1269

<https://www.customtruck.com/locations>

## NBT55128 2014 Peterbilt 367

**\$ 375,500**

Stock ED221864 VIN 1NPTX4TX8ED221864



### Detailed Specification

<b>Attached Body</b>	NBT55128	<b>Attachment Year</b>	2013
<b>Axle Config</b>	12x6	<b>Block Heater</b>	YES
<b>Brakes</b>	AIR	<b>Cab Type</b>	REGULAR CAB
<b>Characteristic Type</b>	55 TON CRANE	<b>Current Meter Reading</b>	86819.000000
<b>Engine Hours</b>	6252.000000	<b>Engine Hp</b>	450
<b>Engine Make</b>	CUMMINS	<b>Engine Model</b>	ISX
<b>Engine Size</b>	15	<b>FA Capacity</b>	20000
<b>Fuel Tank Capacity</b>	90	<b>Pusher Axles</b>	(2) 8K STEERABLE
<b>RA Capacity</b>	66000	<b>Rear Axle Ratio</b>	4.10
<b>Rear End Ratio</b>	4.10	<b>Rear Suspension</b>	AIR TRAC
<b>Transmission</b>	Manual	<b>Transmission Model</b>	RTO16908LL
<b>Transmission Speed</b>	8LL	<b>Wheelbase</b>	295

DISCLAIMER: Price quoted includes any applicable FET. Quoted price is Ex Works and does not include any freight / delivery charges, sales tax, titling fees, or registration fees. Specifications are believed to be correct but may contain errors and/or omissions. Pictures are representative and may not be identical. Description and Images Custom Truck One Source