



Custom Truck One Source

Forest, VA

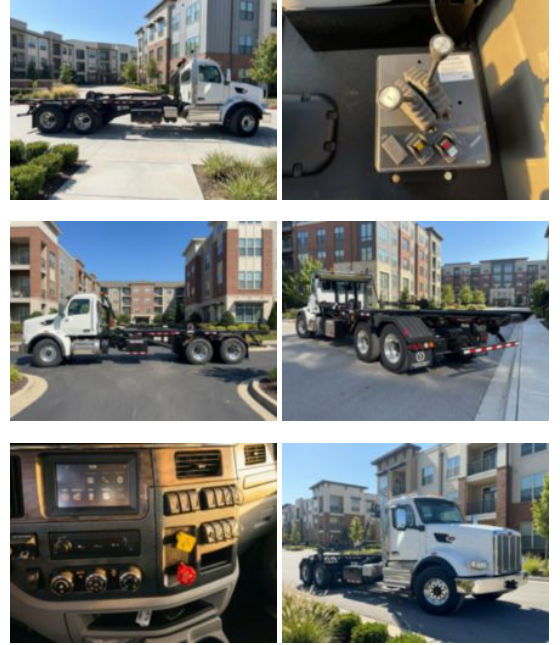
Phone: (816) 256-3200

<https://www.customtruck.com/locations>

2025 Peterbilt 567 6x4 Galbreath U5-OR-174 Roll-Off Truck

Call for price

Stock SD743047 VIN 1NPCL40X6SD743047



Truck Specifications		Unit Specifications	
CARB Registered	No	Attachment Year	2024
Year	2025	Attachment Make	Galbreath
Make	Peterbilt	Attachment Model	U5-OR-174
Model	567	Rolloff Capacity (lb)	60000
Cab Type	REGULAR CAB	Roll Off Maximum Container Length (ft)	22
CA or CT	192	Roll Off Minimum Container Length (ft)	18
Chassis Class	CLASS 8 CHASSIS		
Engine Make	CUMMINS		
Engine Model	X15 D		
Engine HP	450		
Transmission	Automatic		
Transmission Speed	6		
FA Capacity	20,000		
RA Capacity	46,000		
Wheelbase	266		
Brakes	AIR DISC		
Rear Suspension	HMXEX460		
Engine Size	14.9		
Engine Fuel Type	Diesel		
Axle Config	6x4		
GVWR (lb)	66,000		
Frame	DOUBLE		
PTO Options	YES		

DISCLAIMER: Price quoted includes any applicable FET. Quoted price is Ex Works and does not include any freight / delivery charges, sales tax, titling fees, or registration fees. Specifications are believed to be correct but may contain errors and/or omissions. Pictures are representative and may not be identical. Description and Images Custom Truck One Source