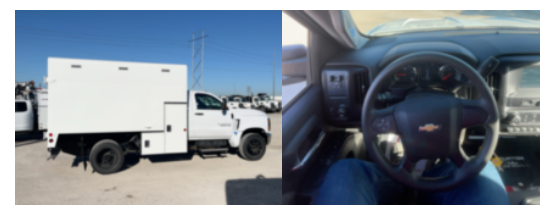


**2023 Chevrolet 6500 4x2 ArborTech 11x66 Chip Truck**

**Call for price**

Stock PH523897 VIN 1HTKHPVM6PH523897



Truck Specifications		Unit Specifications	
<b>CARB Registered</b>	Yes	<b>Attachment Year</b>	2026
<b>Year</b>	2023	<b>Bed/Body Make</b>	ARBORTECH
<b>Make</b>	Chevrolet	<b>Bed/Body Model</b>	ARB11X66CB
<b>Model</b>	6500		
<b>Cab Type</b>	REGULAR CAB		
<b>CA or CT</b>	84		
<b>Chassis Class</b>	CLASS 6 CHASSIS		
<b>Engine Make</b>	DURAMAX		
<b>Engine Model</b>	6.6L D		
<b>Engine HP</b>	350		
<b>Transmission</b>	Automatic		
<b>Transmission Speed</b>	6		
<b>FA Capacity</b>	8,000		
<b>RA Capacity</b>	15,500		
<b>Wheelbase</b>	165		
<b>Brakes</b>	HYDRAULIC		
<b>Rear Suspension</b>	SPRING		
<b>Engine Size</b>	6.6		
<b>Engine Fuel Type</b>	Diesel		
<b>Axle Config</b>	4x2		
<b>GVWR (lb)</b>	23,500		
<b>Frame</b>	SINGLE		
<b>PTO Options</b>	YES		