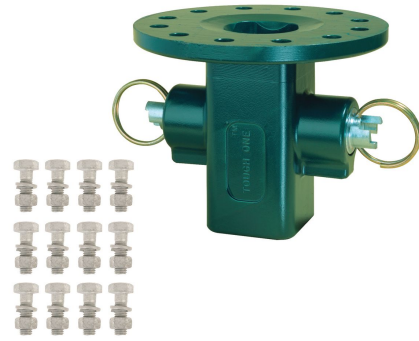




Anchor, Tool, Locking Dog Assembly, 15,000 ft-lb rating

By Chance
Catalog # [C3030981](#)

15K Locking Dog Assembly.



Features

- Locking Dog Assembly bolts to Kelly Bar Adapter and attaches to Anchor Drive Wrench
- TOUGH ONE locking dog assembly has twelve holes for 5/8" bolts on a 7-5/8" bolt circle and comes with twelve 5/8" Grade 5 bolts, nuts and lock washers.

Application

Anchor/Pile Installation

Configuration

Number of Bolt Holes	12
Bolt Grade	2

Dimensions

Diameter - Bolt	0.625 in
Diameter - Bolt Circle	7.625 in
Anchor Installation Hole Size	0.625 in
Width	8.500 in
Weight	34.300 lb.
Height	7.900 in

Length	8.500 in
Dimensions	8.500 in x 8.500 in x 7.900 in

Force Related

Torque Rating	15000 ft-lbs
---------------	--------------

General

Type	Anchor/Pile Installation Tools
Material type	Standard
Coating	Painted
UPC	096359015406

Logistics

Standard Package	1
Pallet Quantity	27

Product Assets

- [Catalog \[English\]](#)
- [Catalog \[English\]](#)
- [Catalog \[English\]](#)
- [Catalog \[English\]](#)
- [Installation Manual \[English\]](#)