



Custom Truck One Source

Lynchburg, VA

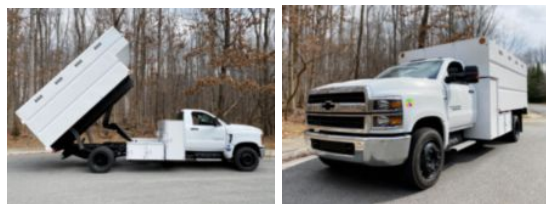
Phone: (434) 525-2929

<https://www.customtruck.com/locations>

CUSTOM CHIPPER BODY PER QUOTE 2022 Chevrolet

Call for price

Stock NH354748 VIN 1HTKHPVM2NH354748



Detailed Specification

Attached Body	CUSTOM CHIPPER BODY PER	Attachment Year	2022
Axle Config	4x2	Brakes	HYDRAULIC
Cab Type	REGULAR CAB	Characteristic Type	CHIPPER BODY TRUCK
Current Meter Reading	0.000000	Engine Hours	0.000000
Engine Hp	350	Engine Make	DURAMAX
Engine Model	6.6L D	Engine Size	6.6
FA Capacity	8000	RA Capacity	15500
Rear Suspension	SPRING	Transmission Model	6 SPEED AUTOMATIC
Wheelbase	189		

DISCLAIMER: Price quoted includes any applicable FET. Quoted price is Ex Works and does not include any freight / delivery charges, sales tax, titling fees, or registration fees. Specifications are believed to be correct but may contain errors and/or omissions. Pictures are representative and may not be identical. Description and Images Custom Truck One Source