



**Custom Truck One Source**

Kansas City, MO

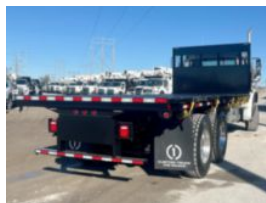
Phone: (816) 558-7290

<https://www.customtruck.com/locations>

**2025 Freightliner M2106 6x4 22' x 102" Load King Flatbed**

**\$ 164,350**

Stock SDWE5092 VIN 3ALHCYFE2SDWE5092



| Truck Specifications      |                 | Unit Specifications   |              |
|---------------------------|-----------------|-----------------------|--------------|
| <b>CARB Registered</b>    | No              | <b>Bed/Body Make</b>  | Load King    |
| <b>Year</b>               | 2025            | <b>Bed/Body Model</b> | LKFB22X102FB |
| <b>Make</b>               | Freightliner    |                       |              |
| <b>Model</b>              | M2106           |                       |              |
| <b>Cab Type</b>           | REGULAR CAB     |                       |              |
| <b>CA or CT</b>           | 183             |                       |              |
| <b>Chassis Class</b>      | CLASS 8 CHASSIS |                       |              |
| <b>Engine Make</b>        | CUMMINS         |                       |              |
| <b>Engine Model</b>       | L9 D            |                       |              |
| <b>Engine HP</b>          | 350             |                       |              |
| <b>Transmission</b>       | Automatic       |                       |              |
| <b>Transmission Speed</b> | 6               |                       |              |
| <b>FA Capacity</b>        | 20,000          |                       |              |
| <b>RA Capacity</b>        | 46,000          |                       |              |
| <b>Wheelbase</b>          | 249             |                       |              |
| <b>Brakes</b>             | AIR             |                       |              |
| <b>Rear Suspension</b>    | AIR             |                       |              |
| <b>Engine Size</b>        | L9 D            |                       |              |
| <b>Engine Fuel Type</b>   | Diesel          |                       |              |
| <b>Axle Config</b>        | 6x4             |                       |              |
| <b>GVWR (lb)</b>          | 66,000          |                       |              |
| <b>Frame</b>              | DOUBLE          |                       |              |
| <b>PTO Options</b>        | PROVISION       |                       |              |

DISCLAIMER: Price quoted includes any applicable FET. Quoted price is Ex Works and does not include any freight / delivery charges, sales tax, titling fees, or registration fees. Specifications are believed to be correct but may contain errors and/or omissions. Pictures are representative and may not be identical. Description and Images Custom Truck One Source