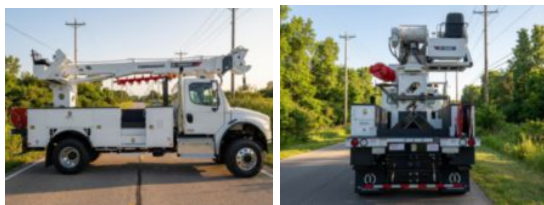


2026 Freightliner M2106 4x4 Terex Utilities Commander

Call for price

Stock THWV0150 VIN 1FVDCXFE3THWV0150



Truck Specifications		Unit Specifications	
CARB Registered	No	Attachment Year	2025
Year	2026	Attachment Make	Terex Utilities
Make	Freightliner	Attachment Model	Commander 4047
Model	M2106	Bed/Body Make	Freedom Truck Equipment
Cab Type	REGULAR CAB	Bed/Body Model	FTEC4047MU126LB
CA or CT	124	Maximum Work Height (ft)	52
Chassis Class	CLASS 7 CHASSIS		
Engine Make	CUMMINS		
Engine Model	L9 D		
Engine HP	300		
Transmission	Automatic		
Transmission Speed	6		
FA Capacity	14,000		
RA Capacity	21,000		
Wheelbase	190		
Current Meter Reading (mi)	36		
Engine Hours (hr)	11		
Brakes	AIR		
Rear Suspension	SPRING		
Engine Size	L9 D		
Engine Fuel Type	Diesel		
Axle Config	4x4		
GVWR (lb)	33,000		
Frame	SINGLE		
PTO Options	YES		